

# The GOLDEN SPIKE



www.svlarm.org

August 2008

Volume 35, Issue 8

## President's Report

By Pete Arney

**July 4th.** Hagan Park in Rancho Cordova was a great place to be on the 4th and 5th of July. The theme of this year's 24th annual July 4th event was "Heart of America: Rancho Cordova, USA". Fireworks, carnivals, shows, beer gardens, kids activities, and ... live steamers. The July 4th committee had this to say about us in their "things to do" at the July 4th celebration:

*All aboard Rancho Cordova's award-winning Sacramento Valley Live Steamers (SVLS) Railroad for a Fourth of July journey back to a time when railroads were opening up the west.*

*The SVLS is a hobby club whose passion is railroads and whose mission is to keep alive the romance of the rails. They have been offering train rides at their location in Hagan Park for two generations of Rancho Cordova children. Some of the built-to-scale trains are powered by diesel and others by steam, but whatever the case, the ride is special. Take a close look at the intricate details and don't hesitate to ask the engineer questions. These guys love to share what they know about trains. You may even decide you are interested in joining this unique, service minded club. In exchange for a donation, the railroaders will take you to a hidden part of the park, where riders zip past built-to-scale buildings.*

*About 30 SVLSRM members volunteered to run trains, provide meals, and sell soda and water, for members and visitors to the event in Hagan Park. Over a period of six hours on Friday and four hours on Saturday, 1200 enthusiastic park visitors rode our trains. Thanks to all who responded to calls for volunteers. Many worked both days but all were appreciated and helped our organization to make a great attraction to kids and adults alike.*

**Make-A-Wish.** Tyler Berchielli has just turned 5 years old. As you may remember, Tyler is an avid train enthusiast and his wish is that he could have his own train to take to our track to run. Roll Models Inc., in conjunction with MAW, will be providing a scale 25 ton locomotive and a riding car that should arrive in the next few months. MAW recently purchased an enclosed trailer for the Berchielli's to transport the equipment in. Recently, SVLSRM members and Tyler's dad, Andy, installed tracks inside and soon, tie downs, to hold the equipment in place. The Berchielli's have an SVLSRM Family Membership so Tyler will be able to enjoy his own train whenever he wants. Tyler and Andy were at our Sunday run day in July. After the public

*Continued on page 3.*



Bring your Train and your appetite and food to share. Join us for a Pot luck dinner and a fun evening around the old railroad tracks.



Recent visitor at SVLSRM

## Calendar

Aug 2 Public run day Noon to 4 PM.  
 Aug 12 Board Meeting 6:30 (RC city hall)  
 Aug 15 Membership Meeting  
**Hot August Night Run**  
 Aug 16 Work Day - come out and help with the railroad  
 Aug 17 Public run day Noon to 4 PM

Sept 6 Public run day Noon to 4 PM  
 Sept 9 Board Meeting 6:30 (RC city hall)  
 Sept 19 Membership meeting moved to the 26th.  
 Sept 20 Work Day - come out and help with the railroad  
 Sept 21 Public run day Noon to 4 PM  
 Sept 26 Membership meeting  
 Sept 27-28 Fall Meet

Public run day calendar available on-line.

**Don't forget about work days**, Every Tuesday also Saturday after members' meeting. Contact a committee member for information on needs. Check the Project page at the SVLSRM web site (<http://www.svlsrcm.org>).

*How will you support SVLSRM this month?*



Special note the September membership meeting has been moved to the Friday before the Fall Meet Sept. 26.

Fall Meet is Sept. 27-28.

Yes that means it is only two months away. Time to come out to the track and help with track, building, and ground maintenance.

  
 Postage rates are higher now.

Save us some money and read the news letters on-line.

Tell Membership that you don't need the mailed copy, we will notify you by E-mail so you can read it on-line.

SVLSRM has new emblem pins and they look great. They cost \$5.  
 See Clio to buy a pin.

(916) 645-9154



The Sacramento Valley Live Steamers Railroad Museum, Inc. is organized and operated exclusively for public benefit charitable purposes within the meaning of Section 501 (C.) (3) of the Internal Revenue Code.

Donors may deduct contributions to The Sacramento Valley Live Steamers Railroad Museum, Inc. to the fullest extent allowed by law as provided in Section 170 of the Internal Revenue Code.

*The Golden Spike* is the published monthly by the Sacramento Valley Live Steamers Railroad Museum, Inc., P.O. Box 273, Rancho Cordova, CA 95741. The SVLS track is located in Hagan Community Park, Chase Drive, Rancho Cordova, CA. Articles may be submitted to: [editor@svlsrcm.org](mailto:editor@svlsrcm.org).

## Board of Directors

President: Pete Arney (916) 988-2000  
 E-mail: [parney@pacbell.net](mailto:parney@pacbell.net)  
 Vice President: Lee Frechette (916) 205-6791  
 E-mail: [leefrechette@yahoo.com](mailto:leefrechette@yahoo.com)  
 Secretary: Bill Yoder (916) 652-7113  
 E-mail: [byoder@vfr.net](mailto:byoder@vfr.net)  
 Treasurer: Lois Clifton (916) 722-8514  
 E-mail: [loisjune1@comcast.net](mailto:loisjune1@comcast.net)  
 Track Superintendent: Darrell Gomes (209) 786-0623  
 E-mail: [dggomes@caltel.com](mailto:dggomes@caltel.com)  
 Yardmaster: Richard Lutrel (916) 344-8989  
 E-mail: [rjl1974@sbcglobal.net](mailto:rjl1974@sbcglobal.net)  
 Trainmaster: Karle Mahler (916) 334-8283  
 E-mail: [karlemahler@sbcglobal.net](mailto:karlemahler@sbcglobal.net)  
 ----- Committee Chairpersons -----  
 Safety Committee: JJ Carbino (510) 782-2349  
 E-mail: [jjcarbino@msn.com](mailto:jjcarbino@msn.com)  
 Special Events: Clio Geyer (916) 645-9154  
 E-mail: [vern78@onemain.com](mailto:vern78@onemain.com)  
 Caboose Ops: Lois Clifton (916) 722-8514  
 E-mail: [loisjune1@comcast.net](mailto:loisjune1@comcast.net)  
 Newsletter Editor: Bill Yoder (916) 652-7113  
 E-mail: [editor@svlsrcm.org](mailto:editor@svlsrcm.org)  
 Membership & T.A.P.: Amy Lutrel (916) 344-8989  
 E-mail: [amy11979@sbcglobal.net](mailto:amy11979@sbcglobal.net)  
**Reminder - no phone calls after 9 PM**

Continued from Page 1 - Presidents report:

run, much to Tyler’s delight, he and his dad, Andy, and were co-engineers while making several trips around our track with the RS3.

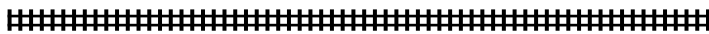
Donations. Generous donations from Rancho Cordova City Council members David Sanders and Dan Skoglund in the amounts of \$2000 and \$1000, respectively, to SVLSRM are greatly appreciated. Both Messrs. Sanders and Skoglund, as well as other members of the City Council, have provided support in the past and continue to be valued champions of our achievements and contributions to the Rancho Cordova community.

Halloween: Yes, it’s just around the corner. Starting this month and continuing through October, SVLSRM will be planning and building scary things to frighten all who dare to come to Haunted Hagan this fall. Jerry Jewell Performing Arts Scary U will be providing their award winning haunted house again this year as in the past. SVLSRM will be responsible for the trackside scares we started doing last year. Along with the “creature box”, covered truss bridge with floating eyes, and creature strobes, we want ideas for many more scary events. Please contact Lee Frechette or Pete Arney with your wild and scariest ideas and your volunteering commitment to make and install the events and to run trains on Halloween. Actual run days and times are yet to be determined.

Major Halloween related projects for us will be the installation of new electrical service to Jerry’s Pirate Town and performing stage area. This service will also be used to upgrade and expand our RV electrical hookups. The other is the completion of at least six new riding cars to carry the multitudes to the haunted house on Halloween.

President. “I will be stepping down as president in mid-June.” Or so I said last June in the Spike. Actually, I’ll be around for a while longer as President. Lee and I have agreed to share duties much the same as was done in the last administration pending resolution of both of our schedules and time commitments.

See you at the track. Keep on steaming!



Steam engine update from Karle

The engine was pulled out of service because of the inability to maintain pressure. The fire pan, burner, and arch were removed to gain access to the firebox. . An inspection of the rear tube sheet found 9 leaking tubes. The leaking tubes have been re-rolled, the net result is that most of them are secure. The plan for tubes that are still weeping is to apply a low viscosity wicking sealant to further reduce and hopefully stop the last of the leaks. While the boiler is down I plan to rebuild the throttle valve.

### Special Runs/Events

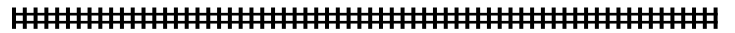
By Clío Geyer

August Special runs:

- Sun. 8/3 11 to 1
- Thur. 8/7 10:30
- Sat. 8/9 1-3
- Sat. 8/16 10-4
- Sat. 8/23 10:30-12:30
- Sun. 8/24 1-3
- Sat. 8/30 10-12
- Sat. 8/31 12-2



Call Clío to help: (916) 645-9154



### Safety Committee Report

The 19<sup>th</sup> of July was a warm work day and the small group working at the park drank a lot of water to prevent dehydration and heat stroke. I did a survey of the track and all looked in order for Sunday’s public run day.

We all need to make sure our museum’s equipment is in tip top operating condition. So let’s make our park equipment show our talents of maintaining safe equipment that haul the public.

I was not able to be at the park on Sunday but, I did discuss the repair on the “Gator” with the President. This tractor, as most know, has no breaks as most know now that only a few will be allowed to operate it at a very slow speed. The President assured me that the board is looking into correcting this problem as soon as funds are available. For those who drive it, it must be very slow especially if there is personal around. Panic stops must be avoided as are sharp turns.

The next safety project to be finished by the safety committee was the painting of safety yellow paint on the ends of the storage tracks and turn tables in the steaming bay. I hope this will prevent folks from running in to these ends as they pose a serious accident if not visible. The committee will be painting the leading edges of top and bottom steps up to the station, box car and other steps that pose a safety problem, such as, to the caboose and steps up to the platform where we get our food at the bay window.

I wish to take this time to remind the committees and board members that we need to be safe in all that we do. Let’s make sure that equipment being brought into and out of the steaming bay and the box car be done safe. Also remember that our guests and museum members must ride on proper designated seats and chair cars.

J.J. Carbino  
Safety Committee Chair  
Safety is Job # 1



**10 Years ago:  
FROM THE  
PRESIDENT  
WHY DO THEY DO  
THIS?**



Recently, on one of our run days, a child was overheard asking his parent, "Why do they do this?" The parent asked, "What do you mean?" The child replied, "Why do

these men ride around on the trains and work on the track? Why do they give rides to people?" It made me think why do we do what we do out there in the park?

What brings our members to our facility not only to have fun, but to do tasks that are seemingly unpleasant and hard work but need to be done? What makes members put aside other things to do the work that is needed, no matter of weather? On top of that, doing it unselfishly, without complaint, and with a smile and good humor. The only answer can be that it is a labor of love. They are laboring to keep and interest alive --an interest that was given to them by others and an interest that they wish to share with the generation which follows. For you see if we do not labor now, then the love of live steam will not be passed on -- it will pass on with us.

I say thank God for those who labor.

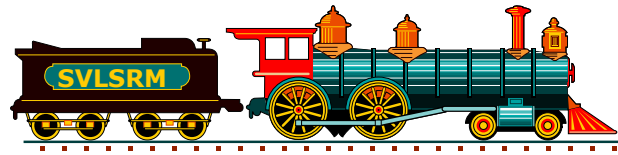
**Tony Rohrs - President**

**20 Years ago: (7/88) "From the Cab"**

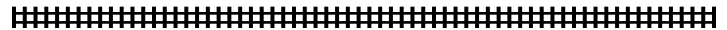
Summer is certainly here, and while our weather varies greatly from day to day, we have had our fair share of very hot work and run days. Realizing that hot days are not the most popular time to work in the park, I understand why some of you have not been around much. I also realize that summer is vacation time. I have been told that "Everyone is so busy this time of the year". Now I am sure you are wondering where all of this is leading. Well it is the same old song. In most organizations, 10 to 15 percent of the members do most of the work. With our membership at well over 100 people, we should see 10 to 15 people helping with the work of running our railroad. Wow! That would be double what we usually get. As busy, hot and vacation laden as summer time is, it is also the time that we do most of the operating and when the most maintenance is required. How do we get the work done? How long should a small handful of dedicated members have to carry those of you who are unwilling to do your share? Why should they carry you at all?? Hey, does this sound familiar? Well if you are tired of hearing it, I am tired of saying it. Then you ask why do I keep doing it? The answer is, once in a while I get lucky and hit a nerve. Sometimes a new face will show up and pitch in on a work day and while this sermon business may seem to be a poor way to get help, what little help it brings is vital to the task at hand and to the morale of the tiny team who are struggling to keep your club functioning. It's never too late! You can still come out and contribute your share. - Let's play trains. -- Dennis Gramith

**30 Years ago:**

No August news letter - Editor on vacation.



Please check the SVLS web site [www.svls.org](http://www.svls.org) for current information on SVLS activities.



There are plenty of projects to work on at the railroad so you need to come out and give time to your organization.

Come and help. Your help is needed. Don't know what to do then call a board member and ask, then volunteer.



**Safety Rules for the Month**

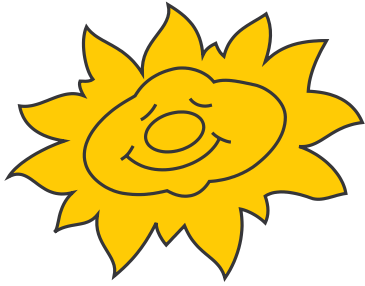


116. Anyone consuming any alcoholic beverages, including beer, or use of any illegal drugs or narcotics of any kind shall be requested to cease. If they refuse, they will be asked to leave the facility.

215. When visibility is limited and after sunset, all trains shall have a lighted headlight (white) showing to the front on the engine and a marker on the last car showing red to the rear. Trainmen shall have a lighted lantern suitable for giving hand signals. Such lights shall be visible for a distance of at least one hundred fifty (150) feet.

303. All conductors and engineers must be able to demonstrate thorough knowledge of basic rules of safe operation to the satisfaction of the Trainmaster or his designated alternate and in addition all engineers shall be thoroughly briefed on the individual engines they are to operate.

411. Steam boilers burning solid fuel shall have an ash pan constructed and installed to prevent dropping burning ashes of fuel along the right-of-way while the locomotive is in operation.



The Safety committee has painted the ends of the steaming bay racks, and other objects to be more visible with attentions to being safe.

The track crew and continued to work on the new yard. The middle track was completed after this picture was taken.

Got some time then come out and help.



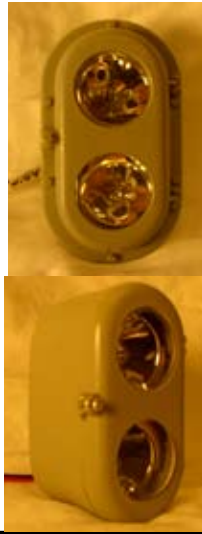
# for sale

## 1.5" scale Pyle National extended case or flush mount dual GYRALITE.

They operate "True to scale" from the prototype and is constructed primarily of brass. The light operates on 2.5vdc. Price \$395.00 allow five weeks receipt of order.

12vdc to 2.5vdc voltage regulator/reducer for GYRALITES. \$30.00

Keith Jackman  
636 Linden Ave.  
Grass Valley, CA 95945  
Ph: (530)272-8531  
kjackman@sbcglobal.net



Mechanical cylinder cocks for 1 to 4 inch cylinder. 1/8 NPT \$80 per pair.

Ross Crawford 916-718-4162

**Wanted** a Atlantic or Pacific or 10 wheeler or? Engine must be ready to run, 1 1/2, 71/2 gage.

Will trade a fully restored 1957 Ford Fairlane Club Victoria 2dr hardtop for a steam locomotive. The Ford has a 292 V8 and automatic. Was driven to Texas and back and ran good. Only 2400 of this type was made in 1957. I have \$23,000 in car. I have more photos if you need them.

Paul Thomson ph: 925 672 5477

## 7 1/2" Gauge 4+4

**Beam Engine** and tender with two 7 1/2 foot bench type riding cars equipped with Tom Bee trucks and couplers. Pneumatic



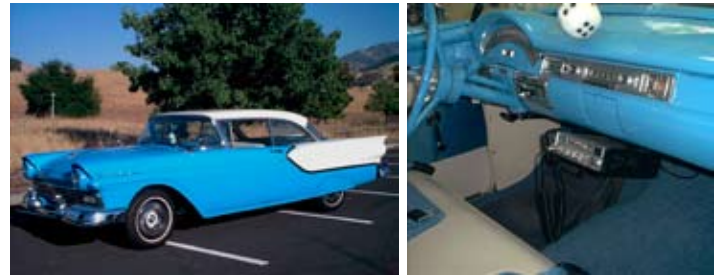
brakes on all cars. Current SVLSRM boiler certificate on a 12" diameter vertical steel boiler, propane fired with 306 3/8" diameter copper fire tubes. Twin cylinder double acting engine with Stephenson valve gear and a bore and stroke of 2"x2.75" driving 4.375" diameter wheels through a 20% overdrive. Drive chains are tight at all times. There is a constant speed universal joint in the center of each truck to allow movement while keeping the drive chains tight. Engine weighs about 400 pounds with eight driving wheels arranged in two four wheel trucks. I haven't found a track or turn I couldn't handle at normal track speed. The suspension is very flexible, rock solid on the rails and the engine has a working headlight. This engine is a runner, fast, with exceptional pulling power and is very easy to run, very forgiving. You can check and adjust either firing or water level in about two seconds. Because of having a vertical boiler the engine does not require any additional inputs to fire up, just open the valve on the propane tank and light the burner after you fill the boiler and the water tank with water.

The train is set-up on a new two wheel trailer for towing with a car or small pick-up truck. I estimate the weight of the complete train and trailer at about 1000 pounds. The train and trailer are located in Reno, Nevada.



**Asking \$10,000**

Contact Bill Cody at (775) 674-6512 or steamboatbill@sbcglobal.net for additional information/pictures.



**5 ton hydraulic car lift**, great for use as train lift/turntable.  
Gil Beard 530-823-8142

**SALES: Switch stands**, point throw mechanism and point plate for attaching the points is included with the switch stand. A complete set-up for \$85.00 plus shipping. <http://www.timbercreekrr.zoomshare.com/> Contact me by phone or e-mail for questions and quantity discounts.



## FIGURE "8" MARS LIGHTS FOR SALE.



Each light has an L.E.D. that puts out over 50 lumens of light and is good for 100,000 hours, as stated by the manufacturer of the light. Just wire it into your 12VDC system, mount it to your locomotive and go!!! \$300.00 each with free shipping in the

Continental USA only.

Gordon Briggs timbercreekrr@yahoo.com (530)273-9145



Got Something for Sale?

Send to editor@svlsrm.org