

# The GOLDEN SPIKE



www.svlsrcm.org

December 2009

Volume 36, Issue 12

## President's Report

By Lee Frechette

The holiday season is upon us once more, providing a perfect opportunity to reflect on where we have been during the past year and where we are going as a new decade begins.

We are participating again in the Rancho Cordova Christmas Tree Lighting event at Village Green Park in Rancho Cordova. We hope that our trains encircling a beautiful Christmas tree will become a lasting memory for a new generation of children, inspiring them to learn more about the wonderful world of steam locomotives. We will also help launch the important once-a-decade national nose count known as Census 2010 as we invited everybody to climb aboard and participate fully in this important civic milestone.

Looking back over 2009, it has been a year of much work on the part of the Sacramento Valley Live Steamers Railroad Museum. As the year dawned, we found ourselves deeply engaged in the business of replacing hundreds of feet of track, a task undertaken by our members, and assisted to completion by Americorps volunteers. My sincere thanks to all who helped us accomplish this huge project.

In February, we were honored by the Cordova Community Council with their coveted Distinguished Community Service Award. In making the award, the Council said this about our club:

*"To know the Live Steamers is to be acquainted with a quiet group of civic-minded volunteers who don't ask much more than you come and enjoy a train ride now and then. But in fact they are much more. The Live Steamers are part of what growing up in Rancho Cordova is all about: staying on track, working hard to get*

*Continued on page 3.*



### Christmas Potluck and White Elephant Gift Exchange

Friday, December 18, 2009  
6:30 P.M.

#### You will not want to miss this evening of fun.

Each family is asked to bring a potluck supper item:  
salad or main dish or dessert.  
Drinks will be furnished.

Do not forget to bring a WRAPPED



White Elephant gift for the gift exchange!  
One gift per person and something you no longer want!

We will also be joining together in singing some Christmas carols.

We look forward to seeing each one of you  
and wish you and yours a very Merry Christmas!

Questions/info:  
Betty Arney 916-988-2000



**Election 09:** Our annual General Membership meeting election results: President, Lee Frechette; Secretary, Clio Geyer; and Train Master, Brad Jones.

## Happy Holiday



Santa Train Dec 5 & 6 Noon to 4pm.



We are in need of people to help set up on Friday Dec. 4 starting at 10:00 AM and we need volunteers to help at Santa's Home and at the station, and engineers,

for the Santa Run. Marilyn Drewes has offered the use of her steam engine again this year for pictures. The scenery will be put up on Tuesday. If there is anyone who would like to donate decorations they would be greatly appreciated. You can bring them to the park on Friday or drop them off at my home, or you can call and we can pick them up. The Sach family will be taking pictures and printing them again this year. They will be \$10 for a 4X6 or CD and \$15 for both. We will be serving Hot Chocolate, Hot Apple Cider, cookies, candy canes. I would like to do something a little different this year if any one has any ideas. Gil Beaird has offered to bring his steamer to ride the public for both days.

Call Lois to volunteer or for more info.  
(916) 722-8514.

## SVLSRM Calendar

- Dec. 5-6 Santa Train Take a train ride to have your picture taken with Santa. Noon to 4 PM.
- Dec. 8 Board Meeting 6:30 P.M. (City hall)
- Dec. 18 Membership meeting and POTLUCK dinner
- Dec. 19 - no work day -
- Jan. 1, 2010 Members New Years Day Run - bring your train and let's run all day.
- Jan. 12 Board Meeting 6:30 P.M.
- Jan. 15 Membership meeting 7:30
- Jan. 16 Work day.

Public run day calendar available on-line.

**Don't forget about work days**, Every Tuesday also Saturday after members' meeting. Contact a committee member for information on needs. Check the Project page at the SVLSRM web site (<http://www.svlstrm.org>).

**How will you support SVLSRM this month?**



Please check the SVLS web site: [www.svlstrm.org](http://www.svlstrm.org) for current information on SVLSRM activities.



**Help us save money.**

Save SVLSRM some money and read the news letters on-line. Tell Membership that you don't need the mailed copy, we will notify you by E-mail so you can read it on-line.

The Sacramento Valley Live Steamers Railroad Museum, Inc. is organized and operated exclusively for public benefit charitable purposes within the meaning of Section 501 (C.) (3) of the Internal Revenue Code.

Donors may deduct contributions to The Sacramento Valley Live Steamers Railroad Museum, Inc. to the fullest extent allowed by law as provided in Section 170 of the Internal Revenue Code.

*The Golden Spike* is the published monthly by the Sacramento Valley Live Steamers Railroad Museum, Inc., P.O. Box 273, Rancho Cordova, CA 95741. The SVLSRM track is located in Hagan Community Park, Chase Drive, Rancho Cordova, CA. Articles may be submitted to: [editor@svlstrm.org](mailto:editor@svlstrm.org).

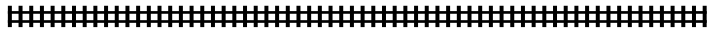
## DUES ARE DUE

### JAN 1, 2010

**IF YOU HAVE NOT PAID THEN YOU SHOULD RECEIVE A RENEWAL FORM TO VERIFY AND SEND BACK WITH YOUR DUES.**

**THANKS**

Remember Feb. 1 is the cut off date for roster and newsletter mailings.



Your editor is looking for pictures or movies of SVLS activities so we can make a copy and add to our Historical collection. If you have some please notify the editor. Thanks - Bill



### Board of Directors

- President: Lee Frechette (916) 205-6791  
E-mail: [leefrechette@yahoo.com](mailto:leefrechette@yahoo.com)
- Vice President: Bill Yoder (916) 652-7113  
E-mail: [byoder@vfr.net](mailto:byoder@vfr.net)
- Secretary: Clio Geyer (916) 645-9154  
E-mail: [vern78@onemain.com](mailto:vern78@onemain.com)
- Treasurer: Lois Clifton (916) 722-8514  
E-mail: [loisjune1@comcast.net](mailto:loisjune1@comcast.net)
- Track Superintendent: Darrell Gomes (209) 786-0623  
E-mail: [dggomes@caltel.com](mailto:dggomes@caltel.com)
- Yardmaster: Andy Berchielli (916) 348-7252  
E-mail: [ajberchielli@sbcglobal.net](mailto:ajberchielli@sbcglobal.net)
- Trainmaster: Karle Mahler (916) 334-8283  
E-mail: [karlemahler@sbcglobal.net](mailto:karlemahler@sbcglobal.net)
- Committee Chairpersons -----
- Safety Committee: JJ Carbino (510) 782-2349  
E-mail: [jjcarbino@msn.com](mailto:jjcarbino@msn.com)
- Special Events: Clio Geyer (916) 645-9154  
E-mail: [vern78@onemain.com](mailto:vern78@onemain.com)
- Caboose Ops: Lois Clifton (916) 722-8514  
E-mail: [loisjune1@comcast.net](mailto:loisjune1@comcast.net)
- Newsletter Editor: Bill Yoder (916) 652-7113  
E-mail: [editor@svlstrm.org](mailto:editor@svlstrm.org)
- Membership (Temp): Clio Geyer (916) 645-9154  
E-mail: [vern78@onemain.com](mailto:vern78@onemain.com)
- Reminder - no phone calls after 9 PM**



### Track Superintendent

By Darrell Gomes

I would like to start by thanking Dave Morgan for the fabricating and donating this switch stand. I will be installing the stand on the entrance switch to Midway Yard. The Track crew has rebuilt switch #26 with plastic ties and steel guide rails. The Sugar Pine track is all bolted together and we will start to ballast this month. Check the web site for track status after New Years Day for track closers in January and February. Gail & I want to wish you a MERRY CHRISTMAS and hope to see you at The CHRISTMAS PARTY !



*Continued from Page 1 - Presidents report:*

*to the top of a hill and enjoying the breeze on the way down. Thank you to the Live Steamers for a great ride... with many more sure to come."*

We collaborated with the Sacramento Tree Foundation in a massive tree-planting project that will grow and flourish over the years to come. More than 130 trees are taking root along our railroad, providing a lush backdrop for SVLS members and our guests.

We added wonderful new crossbucks to the Cobble Creek Grade Crossing just in time for the Fall Meet. As the weather cooled and autumn arrived, we installed a new grade crossing between the Meadow and Golden Spike that will improve railroading for all.

In addition to a successful Fall Meet, we also hosted a vibrant Spring Meet, bringing together hundreds of club members and guests who share a common love of railroading.

We pulled hundreds of children and their families during community celebrations like Kids Day in the Park in April and Rancho Cordova Fourth of July. We helped the Rancho Cordova All-America City effort by hosting a fund-raising Ice Cream Social that turned out to be a fun project we may wish to continue into the future.

The year was not without challenges. Our partner for several years in the Haunted Train Ride at Halloween decided to take the year off, forcing us to do the same. We look forward to October 2010 when, with a new and improved plan, we are able to thrill kids and raise funds for the railroad once again.

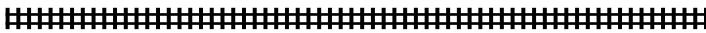
We sadly said good-bye to one of our Founding Fathers, Milon Thorley. Milon's many contributions are too numerous to mention here, but will be discussed for years to come by those of us who knew and revered him as an early and effective champion of all that we do here at the Sacramento Valley Live Steamers Railroad.

I want to thank one and all for all you do to make the Live Steamers the wonderful organization it is. I am reminded how each contribution has unique value. I hope I will be excused in singling out the outstanding additions our Yardmaster Andy Berchielli has made this year, working long hours every week and making an incredible difference in how we look. My deepest gratitude to Andy and all the others who work so hard.

I hope you are planning to join us for our the Annual Santa Train Run on Dec. 5-6 and for the Christmas Party and White Elephant Gift Exchange on Dec. 18. Until then, please accept my thanks for your personal friendship and dedication to the Sacramento Valley Live Steamers Railroad Museum.

# Happy Holidays

Lee Frechette



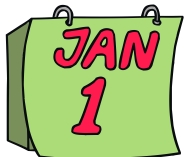
### YARD MASTERS REPORT

By Andy Berchielli



Happy Holidays to all. Thanks to all that helped with the portable track setup and tear down at Roseville Railfair and the Christmas Tree Lighting. Things go so much very smoother with the help of the members. Our last event is Santa Train. Hope to see you there. Americorps has already had a couple of work days at the

park. They are a major help for all the yard work that needs to get done. We will have them for 8 weeks the beginning of next year working on a couple of improvement projects. Thank them for their help if you see them. Also, thanks to Terry Willes for raking all the pine needles around the box car area. It seems like a never-ending project, but it needs to get done and is very much appreciated.



### Members New Year Run Day.

9 AM - Bring your train, your family, food and have a fun day at the track.

Lunch will be potluck but suggest a CHILI COOKOFF if you have a favorite recipe for Chili. If you don't have a favorite recipe for chili then just bring a food dish to share.



Bring your train and have a fun day riding trains. We will have contests, prizes, and maybe some switching or reverse running.

Start the year with good food and friends.



# for sale

## TWO STEAM Trains for sale. Buy one or both.

1: 1.5" scale, 7.5" gauge Clishay locomotive and riding car. \$6,500. Engine is a two cylinder double acting 1 1/4x1 1/2". Boiler upgraded from the original 8" diameter water tube to a steel 10" diameter propane fired fire tube boiler with 73 1/2" copper fire tubes. Pneumatic FWD/REV shift and brakes on locomotive. Usual Accessories: working headlight, bell, new whistle, two new relief valves, engine driven feed pump and a hand pump. New body and trucks on riding car. Engine and tender set-up on a single axle trailer for transport.

2: Recently refurbished CRAB locomotive and tender. Loco is about 14" wide and 22" long. Two cylinder double acting engine with a bore and stroke of 1.375 x 2.5". Slip eccentric valve gear, a mechanical lubricator and crosshead driven feed pump. Boiler is about 9" in diameter and 14" tall, propane fired with 8 individual burners in a ring. Burner control manifold is on the tender along with the pilot light control. Boiler feed is by a crosshead pump with a hand pump for back-up.

Tender has mechanical brakes and is about 16" wide by 5 feet long. Holds about 12 gallons of water and a 5 gallon propane tank. Tender is freshly painted.

Asking \$3,500, RTR. Reasonable offers considered or will trade for a small diesel loco and riding car. I'm looking for something my grandkids can run, not too big, not too fast, not too heavy.

Contact Bill Cody at (775) 674-6512 or steamboatbill@sbcglobal.net for additional information/pictures.

## For Sale - Timber Creek Train stuff in 7.5" gauge "make offer and no 'reasonable' offer will be refused"

1. Two #4 turnouts with switch stands \$350.00 ea. Without switch stands \$300.00 ea.
2. One 43 degree crossing, 1/2'x1" steel bar completely machined to accept rail with all connectors and fasteners included @ \$400.00 or make offer.
3. Train carrier with a loading extension for a pick-up that has a 76" bed, This was used in my 2000 Dodge Dakota with an extended cab. Has rails attached for two switcher type engines or two pieces of rolling stock. Not pictured are two flat irons for attaching to the tail gate and body of truck. This saves your tailgate cables from separating from the heavy weight of loading engines.. \$45.00 or offer for the lot.
4. Crane and cradle for sale \$200.00, Capacity of 2 tons for crane, not sure of cradle, but it has lifted any piece of my rolling stock. There is two 3' lifting straps included.

Gordon Briggs @ (530) 273-9145 [home](http://home), or (530) 615-7256 [mobile](http://mobile). E-Mail: [timbercreekrr@yahoo.com](mailto:timbercreekrr@yahoo.com).  
Payment by **BANK CHECK ONLY** or **CASH**.

**1/2 scale Brass Bell** \$200 It is about 14" high, 12" around - on base about 50lbs. Was modeled after 1930 steam engines bell.

Two manuals (maintenance & operating) for a German ML4000 C' C' Diesel/Hydraulic (in English) \$15. each.

Contact: Charles Williamson (916) 363-2395

*Editor note: SP bought several ML4000 models in the mid 1960s - The sole surviving unit (SP9010) is under restoration at Niles Cannon railroad. - from wikipedia.org*

Check our web site FOR SALE page for pictures and more details. <http://www.svlsrcm.org/sale.php>

1" scale Pacific. Plus flat cars, tender and the stand that the loco is on are all for sale. Also a box of odds and ends. Asking \$8000 or reasonable offer. Email for pictures or info.

Contact: Michael Savarino email: [mssavarino@yahoo.com](mailto:mssavarino@yahoo.com)

An Andy Clarici original one of a kind. Hall Scott car with trailer car 7.5" gauge, roughly 2" scale. Includes 5' x 10' trailer with custom cover. Also includes spare engine. Asking \$10,000 for all. Located in Sacramento area.

Contact Paul or Lois Clifton 916-722-8514

**Switch stands**, point throw mechanism and point plate for attaching the points is included with the switch stand.

A complete set-up for \$75.00 (plus shipping)

<http://www.timbercreekrr.zoomshare.com/>

Contact me by phone or e-mail for questions and quantity discounts.

Gordon Briggs [timbercreekrr@yahoo.com](mailto:timbercreekrr@yahoo.com) (530)273-9145

## 1.5" scale Pyle National extended case or flush mount dual GYRALITE.

They operates "True to scale" from the prototype and is constructed primarily of brass. The light operates on 2.5vdc. Price \$395.00 allow five weeks receipt of order. 12vdc to 2.5vdc voltage regulator/reducer for GYRALITES. \$30.00

Keith Jackman

Ph: (530)272-8531 OR [kpjackman@sbcglobal.net](mailto:kpjackman@sbcglobal.net)

#1. Mechanical cylinder cocks for 1 to 4 inch cylinder. 1/8 NPT. Four per set, \$80 per set.

#2. Steam oil \$10. per quart.

#3. 6 wheel common wealth passenger trucks for 7 1/4 or 7 1/2 gauge. \$1200. Per pair.

Ross Crawford 916-718-4162