

The GOLDEN SPIKE



www.svlarm.org

August 2018

Volume 45, Issue 8

President's Report

By Andy Berchielli

July 3rd and 4th events were well attended thanks to one of the coolest 4th of Julys in recent memory. We had over 1000 riders in the two days.



I would like to thank the members who helped out in the month of July and throughout the year. Without member participation the club does not improve. Whether you do a project at home or work at the club, every little bit matters. My goal as President is to see some kind of improvement each month. And so far we have made great progress this year. Thank You! With that being said a small committee got together to brain storm some master plan ideas. You can find this on the website under projects. If a member would like to take on one of these projects you are more than welcomed. Let me know and we can work though it together.

We can now check off one item on the list. Our long term water irrigation project is complete. Covering everything from the bike trail in the park to our fenced area. It is all covered without hitting the track. This was funded by the Measure H Grant with work completed by Olympic under the watchful eye of John Buindo with the Park District and myself.



We had 21 people show up for the July work day tackling the container, track, weed spraying, SP caboose library, and of course lunch. Next up - our Hot August Night run on August 18. Bring some food to share and enjoy the fellowship of our train family.



Come to the track August 18th for a Fun Time Train Run and Pot Luck Dinner.

Join us during the day and run your trains into the night for a good old-fashioned evening of *Live Steaming* SVLS style.

Come early and bring the kids. Bring engine and some rolling stock and your *favorite food dish to share*. The barbecue will be hot and the lights will be on for ya. So hang FRED on the last car and *come on down!*

I'm saving the best for last...Our Dash 9 has arrived! Kevin took on the paint job. Painted as voted on by membership, Southern Pacific. It will be ready to run for our August Public Runs. With this new acquisition space has become a premium. So we cleaned up Container 4 and have added two tracks leading to the container from Oasis. The work train will be stored down below with the Dash 9 taking its place in the boxcar.



DASH-9

SVLSRM Calendar

- Aug. 4 Public run day - 11 AM - 3 PM
- Aug. 5 Public run day - 11 AM - 3 PM
- Aug. 13 Board Meeting at 6:30 PM Community Board Room
Rancho Cordova City Hall. Members welcome.
- Aug. 18 Hot August **Night Run** Please bring your train
and enjoy the day and evening.
- Sept. 1 Public run day - 11 AM - 3 PM
- Sept. 2 Public run day - 11 AM - 3 PM
- Sept. 10 Board Meeting at 6:30 PM Community Board Room
Rancho Cordova City Hall. Members welcome.
- Sept. 15 Work Day
- Sept. 16 Member Run Day

Dates to reserve on your calendar:
Fall meet Oct. 19, 20, & 21


Please volunteer to support the club events.
How will you support SVLSRM this month?

Do you like running trains? We are in need of conductors, engineers and hostlers for both steam and diesel. If you are interested in joining our operating crew, please contact Alex Wilde at secretary@svlsm.org to be added to our email list. We are in the process of creating updated tests to match our latest rule book release earlier this year. On the job training is available!



Have a neighbor or friend who has an interest in Live Steam / Trains? Bring them out, show them our fun, give them a ride and invite them to join.

Save SVLSRM some money and read the news letters on-line. Tell Membership that you don't need the mailed copy, we will notify you by E-mail so you can read it on-line.



Help us save money.



Please check the SVLSRM web site www.svlsm.org for current information. If you have not looked for a while, then you will have missed news or for sale items that are not in the newsletter.

The Sacramento Valley Live Steamers Railroad Museum, Inc. is organized and operated exclusively for public benefit charitable purposes within the meaning of Section 501 (C.) (3) of the Internal Revenue Code.

Donors may deduct contributions to The Sacramento Valley Live Steamers Railroad Museum, Inc. to the fullest extent allowed by law as provided in Section 170 of the Internal Revenue Code.

The Golden Spike is the published monthly by the Sacramento Valley Live Steamers Railroad Museum, Inc., P.O. Box 273, Rancho Cordova, CA 95741. The SVLSRM track is located in Hagan Community Park, Chase Drive, Rancho Cordova, CA. Articles & Pictures may be submitted to: editor@svlsm.org. **The news letter deadline is 24th of each month.**
Member articles wanted.

Board of Directors

- (##) *Ending year of term*
- President: Andy Berchelli (916) 752-6697 (19)
E-mail: president@svlsm.org
 - Vice President: Dennis Gramith (916) 988-7884 (18)
E-mail: vicepresident@svlsm.org
 - Secretary: Alex Wilde (530) 919-5026 (19)
E-mail: secretary@svlsm.org
 - Treasurer: Alison Berry (916) 983-9712 (18)
E-mail: treasurer@svlsm.org
 - Track Superintendent: Dennis Bowie (916) 337-9492 (18)
E-mail: tracksuper@svlsm.org
 - Yardmaster: Rob Sharratt (916) 631-8963 (18)
E-mail: yardmaster@svlsm.org
 - Trainmaster: Peter Welch (916) 838 4998 (19)
E-mail: trainmaster@svlsm.org
 - Director1: Bill Yoder (916) 652-7113 (18)
E-mail: director_bill@svlsm.org
 - Director2: Steve Milward (530) 559-2472 (19)
E-mail: director_steve@svlsm.org

Committee Chairpersons

- Membership Chairperson: Barbara Rohrs (916) 730-1415
E-mail: membership@svlsm.org
- Safety Chairperson: --- OPEN ---
E-mail:
- Caboose Chairperson: Barbara Moser (916) 645-3425
E-mail: caboose@svlsm.org
- Birthday & Company Event Chairperson: Stacy Reese
Phone: (916) 572-7857 E-mail: Events@svlsm.org
- Newsletter & Web Editor: Bill Yoder (916) 652-7113
E-mail: editor@svlsm.org

Reminder - No phone calls after 8:59 PM



VOLUNTEERS

June 30, 2018
Paul Skidmore, Gordon & Barbara Moser,
Kevin and Andrew Sach, Dennis Bowie

July 3, 2018
Phil & Stephanie Huntingdale,

Gordon & Barbara Moser, Kevin & Andrew Sach,
Dennis Gramith, Harry Voss, Richard Lutrel, Peter Welch,
Bill & Butch Floyd, David Arrow, Dean Sheet, Dennis, Heidi,
Maren, Ryan Bowie.

July 4, 2018
Phil & Stephanie Huntingdale, Gordon & Barbara Moser,
Christopher, Jennifer, Chloe Roberts, Harrold Walters,
Robert & Wendy Forren, Dennis Gramith,
Isabella Yarsley (Berchielli), Marty & Debbie Carapiet.

July 7, 2018
Glen Wilson, Gordon & Barbara Moser, Bill & Butch Floyd,
Dennis Gramith, Tom & Stacy Reese, Andrew Marrot,
Harry Voss, Bill Yoder, Kevin & Andrew Sach, Dennis Bowie,
Peter Welch, Andy Berchielli.

July 8, 2018
Alison Berry, Dennis Gramith, Harry Voss, Bill & Butch Floyd,
Steve Milward, Kevin & Andrew Sach, Andy Berchielli,
Richard Lutrel.

July 21, 2018
Bill & Butch Floyd, Dennis, Heidi, Maren & Ryan Bowie;
Gordon & Barbara Moser, Steve Milward, Paul Skidmore,
Alison Berry, Alex & Sawyer Wilde, Keith Berry,
Chris, Paul, Eli Donhost, Alex & Sawyer Wilde, Austin Unruh,
Marty Carapiet, Harry Voss.



July Board Summary

by Alex Wilde, Secretary

- The club is exploring its options for cataloging its library of books and making them accessible to all members.
- The UP locomotive is running again although it might be a good time to replace some of its wiring. The SW1500 may need some wheel work, and/or replacement of chains and sprockets.
- Measure H is wrapping up.
- The switch has been cut in from Oasis leading to container #4.
- The Dash 9 from Titan Trains has been delivered in operating condition and will be painted soon.
- The board is exploring signage options along the American River trail and along Chase Dr. to increase ridership at public run days.
- Train crew and other tests will be updated soon to coincide with the updated rule book release earlier this year.
- The club is working towards documenting its standards for track, roadbed, engineer cars, signaling, etc.
- The next board meeting is August 13th, 2018.



Yard Masters Report

By Rob Sharratt

The Measure H irrigation project is officially complete with just a few minor check ups remaining. It has been years in the making and is finally done.

A huge thank you to Richard Latrel, Keith Berry, Marty Carapiet for all the help with weed spraying and mowing. Thank you to all that step up and help; we can always use help trimming trees and bushes and there are always weeding and raking to be done as well. So grab those kids and make it family time. Every little bit of help affects the big picture.



Update on Library Project.

By Alison Berry



Maren Bowie will be organizing the SVLSRM library as her Senior Project. All current books, DVD's, VHS Tapes, and magazines have been unboxed. Maren is organizing all the material and will be categorizing soon. Based on her research, Maren is recommending the Club should use Libib (a library management application). Alison Berry has offered to purchase the professional version for the club's use.





10 Years ago: Make-A-Wish. Tyler Berchielli has just turned 5 years old. As you may remember, Tyler is an avid train enthusiast and his wish is that he could have his own train to take to our track to run. Roll Models Inc., in conjunction with MAW, will be providing a scale 25 ton locomotive and a riding car that should arrive in the next few months. MAW recently purchased an enclosed trailer for the Berchielli's to

transport the equipment in. Recently, SVLSRM members and Tyler's dad, Andy, installed tracks inside and soon, tie downs, to hold the equipment in place. The Berchielli's have an SVLSRM Family Membership so Tyler will be able to enjoy his own train whenever he wants. Tyler and Andy were at our Sunday run day in July. After the public run, much to Tyler's delight, he and his dad, Andy, and were co-engineers while making several trips around our track with the RS3.

**20 Years ago: FROM THE PRESIDENT
WHY DO THEY DO THIS?**

Recently, on one of our run days, a child was overheard asking his parent, "Why do they do this?" The parent asked, "What do you mean?" The child replied, "Why do these men ride around on the trains and work on the track? Why do they give rides to people?" It made me think why do we do what we do out there in the park? What brings our members to our facility not only to have fun, but to do tasks that are seemingly unpleasant and hard work but need to be done? What makes members put aside other things to do the work that is needed, no matter of weather? On top of that, doing it unselfishly, without complaint, and with a smile and good humor. The only answer can be that it is a labor of love. They are laboring to keep an interest alive --an interest that was given to them by others and an interest that they wish to share with the generation which follows. For you see if we do not labor now, then the love of live steam will not be passed on -- it will pass on with us. I say thank God for those who labor.

Tony Rohrs - President

30 Years ago: (7/88) "From the Cab"

Summer is certainly here, and while our weather varies greatly from day to day, we have had our fair share of very hot work and run days. Realizing that hot days are not the most popular time to work in the park, I understand why some of you have not been around much. I also realize that summer is vacation time. I have been told that "Everyone is so busy this time of the year". Now I am sure you are wondering where all of this is leading. Well it is the same old song. In most organizations, 10 to 15 percent of the members do most of the work. With our membership at well over 100 people, we should see 10 to 15 people helping with the work of running our railroad. Wow! That would be double what we usually get. As busy, hot and vacation laden as summer time is, it is also the time that we do most of the operating and when the most maintenance is required. How do we get the work done? How long should a small handful of dedicated members have to carry those of you who are unwilling to do your share? Why



should they carry you at all?? Hey, does this sound familiar? Well if you are tired of hearing it, I am tired of saying it. Then you ask why do I keep doing it? The answer is, once in a while I get lucky and hit a nerve. Sometimes a new face will show up and pitch in on a work day and while this sermon business may seem to be a poor way to get help, what little help it brings is vital to the task at hand and to the morale of the tiny team who are struggling to keep your club functioning. It's never too late! You can still come out and contribute your share. - Let's play trains. -- Dennis Gramith

40 Years ago:

No August news letter - Editor on vacation.



SAFETY RULES FOR THE MONTH



1.12 Property of SVLSRM Material and Equipment

All SVLSRM owned material and equipment is for use of members and guests at the SVLSRM facility ONLY, and shall not be removed from the facility without

permission from the Board of Directors. This includes treated or distilled water, fuel, cars, locomotive, tools, material, etc.

2.05 Safety Chains

A chain, cable or draw bar must be installed between any car on which the Engineer is riding separate from his locomotive. A chain or draw bar must also be installed between any fuel car or cars and the locomotive which it supplies. Some safety device is recommended for all cars.

3.11 Conductor/Trainman Whistle Signals

Communicating signals are used by the conductor when necessary to convey a message to the engineer while the train is running. Communicating signals are blown on the conductor's whistle, loud enough for the engineer to hear above the noise of the engine. Communicating signals given by Conductor/Trainman:

- A. OO When standing, proceed.
- B. _ _ When running, STOP.
- C. OOO When standing, back up.
- D. OOO When running, stop at the next station.
- E. OOOO When running, reduce speed.

4.04 Responsibilities of Stationmaster

The Stationmaster will have complete charge of the Station. The Stationmaster shall have a whistle (police type), red flag, and flashlight in their possession at all times while acting as a Stationmaster. They shall supervise the loading and unloading of all passengers at the passenger station. They shall discreetly refuse passage to passengers who obviously cannot fit or sit safely on a passenger hauling car. They shall make certain that all passengers have been advised and understand the safety instructions before the train leaves the station. They shall work in close cooperation with other operating personnel to keep passenger-hauling trains moving without causing congestion on the mainline.



New Dash-9 along side our old UP engine a little larger engine.



Progress being made in container #4. Wall brackets to hold the pipes, rail. Pipes on Left Rail on right - keep it correct.



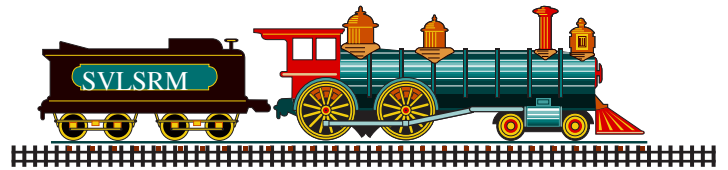
Steve, Dennis, Butch, & Gordon working on 2nd track into container #4. Making lots of dust!



There are plenty of projects to work on at the railroad so you need to come out and give time to your organization.



Come and help. Your help is needed. Don't know what to do? Then call a board member and volunteer.



Editor request: This is your newsletter. I am sure you would like to see more news and train related information. I welcome any and all articles and news from the members. Please contact me if you have anything to add to the SPIKE. Deadline is the 24th of the month.

Got a project you would like to show off that is too big to bring to the meeting for show and tell? Then give the editor a call/E-mail and we'll take pictures for a feature. Bill Yoder - Editor



Got Something for Sale?

Send to Editor@svlsrm.org

Check our web site FOR SALE page for pictures and more details. <http://www.svlsrm.org/>



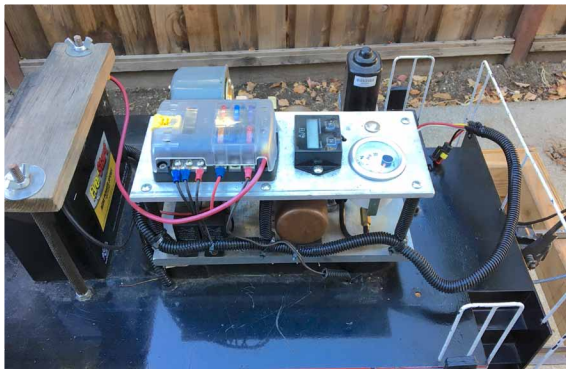
FOR SALE

7.5" ga. Morris EMD style switcher and car

This is a Morris EMD profile locomotive and gondola riding car. The locomotive is rigged to run cab forward moving the noise, heat and exhaust away from the engineer. This is totally ready to run and needs nothing. The locomotive has been painted with prototypically correct, professionally applied automotive paint and fresh vinyl graphics. An upgraded hydrostatic drive has been installed as well as a pressure driven air brake system using a GAST 12 volt compressor. Mountain Car Company brakes are installed on the engineers car using Tom Bee controls. The brakes have proved a must for handling trains with five adult passengers down the grades at Train Mountain.



Features included: Rigged to run cab forward, may be changed to hood forward Head lights Horn Reliable Honda motor, very fuel efficient Upgraded Eaton hydrostatic transmission Prototypically correct automotive paint, applied by body shop Fresh Miracle vinyl graphics Marine quality wiring Brake system compressor system using premium Gast compressor Air brakes installed in engineers car Battery charging by magneto and installed charging port Trickle charger included Safety cables Includes everything pictured including dual seats in gondola and storage rack. Shows some wear from normal use.




Includes everything pictured including dual seats in gondola and storage rack. Shows some wear from normal use. \$9,500.00 or best offer. Contact Tom Via E-mail "maybelater65@yahoo.com" or 707-257-6464

You can be on the rails in steam for only \$5000/offer. I am offering my complete, RTR train consisting of a 7.5" gauge INVICTA locomotive, tender, engineer riding car, and tool car. Loco has a propane fired steel boiler with copper tubes, axle driven feed pump backed up by a hand pump in the tender as well as a axle driven mechanical lubricator. The engine is a twin cylinder double acting with a bore and stroke of 1"x 2.2" There are hand operated mechanical brakes on the engineer's riding car. Tools for firing up and change out the propane tank, lubrication bottles, foot peg bar for tool car and misc. fittings.

Contact Bill Cody at 775-674-6512, cell 775-233-1429 or Email to: steamboatbill@sbcglobal.net Engine is located in Reno, Nevada and can be delivered for a fee. To see and hear a video on the engine being fired and run on the bench, click on this [Video link](#)

South Bend 1929 engine lathe. 16x60 swing, 3 HP 240V single phase motor, threading gearbox, 3 jaw & 4 jaw chuck, steady rest, follower rest, 16 inch faceplate, belt drive, live center, 3/4 inch Jacobs chuck. Bearings rebuilt by Gene Allen in 1972. Lathe is great shape.

\$3000. Call Ross Crawford (916) 718-4162



The club needs more members to be active with our public ride days, and our special events like Parties, Santa Run, and special events. **These events provide our main source of income so please come out and help.** Please volunteer by being added to the crew call list for hauling public to e-mail: secretary@svlsrm.org.