

The GOLDEN SPIKE



www.svlsrcm.org

October 2018

Volume 45, Issue 10



President's Report

By Andy Berchielli

October 6 and 7 is our second annual Pumpkin Express. It was well attended last year. This year we are adding more photo opportunities and have 500 pumpkins on hand to sell for the weekend.

Kona Ice is also supporting us during this event. They will be selling snow cones by our pumpkin patch area. The run time is our normal schedule from 11-3 pm. However we will be setting up Friday and several hours earlier that weekend. Please feel free to pitch in where you can. We will be operating two stations. One is the main station and the second is by the memorial where all the activities are located. We will need train crews, station helpers, decorators, and cashiers to collect the pumpkin funds.

Next up is the Fall Meet. Please check the website to reserve your track assignments, meals, and RV spots. We have 20 RV spots capable of running on "light power usage" and have access to water. Again many activities happen at the Meets and participation from the membership helps with a smooth running meet. Thanks to our Tuesday work crews, the front fence line view has dramatically changed with items being moved or tossed. Gives us a nice clean look to passersbys, and those who attend the meet will also notice.

In other news, our SW1500 engine finally gave out after 2300+ hours. A replacement engine is already on hand. Rob will work on replacing it in the not to distant future.

Special Pumpkin express train is running October 6 and 7. Please come out and help.



Pumpkins patch, where the kids find their pumpkin.



Oct. 19-21. Bring your engine and enjoy three days of running. As done at previous meets, please bring your train cone (number & name) to reserve a siding to park your train during the meet. **RV and Tent camping spots available on first-come basis but you may now request your steaming bay, train parking spur, RV spot, and Dinner reservation on-line.** Also buy your meal tickets or Saturday dinners only tickets [on-line](#) through PayPal)

For info & reservations go to: svlsrcm.org/meet-notice.php

The Caboose will have a sack lunch available on Friday with extras, then breakfast & lunch Saturday & Sunday, with the traditional spaghetti dinner Friday and the big dinner Saturday from El Pollo Loco, flame-grilled chicken, and side dishes. If you will be there for all 3 days of the Meet, consider purchasing a meal ticket. \$40 covers Friday dinner, Saturday breakfast, lunch, catered dinner, Sunday breakfast and lunch. \$25 for a child's (under age 12) meal ticket.

Saturday dinner must be purchased or RSVP'd by Oct. 15th, Monday, of Meet Week.

As always we will need help on Thursday for setup of tables & canopies, then during the meet, food service, bathroom cleaning, trash pickup, & then clean up and put everything away. Please let us know how you will help.

Meet Registration Hours:

Friday & Saturday 9 am - 4 pm, Sunday - 9 am - 12 Noon.

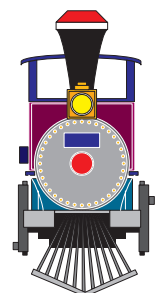
All members & guests attending the meet need to stop to check-in at registration.

Thanks! And it will be great to see you at the meet!



Be a volunteer and enjoy the fun of sharing the hobby.

There are plenty of projects to work on at the railroad so you need to come out and give time to your organization.



SVLSRM Calendar

- Oct. 6 Pumpkin Express - 11 AM - 3 PM
 Oct. 7 Pumpkin Express - 11 AM - 3 PM
 Oct. 8 Board Meeting at 6:30 PM Community Board Room
 Rancho Cordova City Hall. Members welcome.
 Oct. 19 Membership meeting 7:30 at track.
 Nominations for 2019 board.
 Oct. 19-21 Fall Meet
- Nov. ?? Board Meeting at 6:30 PM Community Board Room
 Rancho Cordova City Hall. Members welcome.
 Nov. 17 Work Day
 Nov. 18 Member Run Day

Please volunteer to support the club events.

How will you support SVLSRM this month?

Do you like running trains? We are in need of conductors, engineers and hostlers for both steam and diesel. If you are interested in joining our operating crew, please contact Alex Wilde at secretary@svls.org to be added to our email list. We are in the process of creating updated tests to match our latest rule book release earlier this year. On the job training is available!

The Sacramento Valley Live Steamers Railroad Museum, Inc. is organized and operated exclusively for public benefit charitable purposes within the meaning of Section 501 (C.) (3) of the Internal Revenue Code.

Donors may deduct contributions to The Sacramento Valley Live Steamers Railroad Museum, Inc. to the fullest extent allowed by law as provided in Section 170 of the Internal Revenue Code.

The Golden Spike is the published monthly by the Sacramento Valley Live Steamers Railroad Museum, Inc., P.O. Box 273, Rancho Cordova, CA 95741. The SVLSRM track is located in Hagan Community Park, Chase Drive, Rancho Cordova, CA. Articles & Pictures may be submitted to: editor@svlsrm.org.

The news letter deadline is 24th of each month.

Member articles wanted.

MEMBERSHIP

by Barbara Rohrs

Welcome to New Members

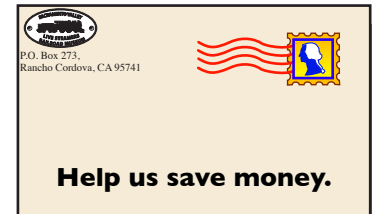
Bill & LaDawn Wilde, Cameron Park

Michael Wilde

Mary Wilde

Save SVLSRM some money and read the news letters on-line.

Tell Membership that you don't need the mailed copy, we will notify you by E-mail so you can read it on-line.



Please check the SVLSRM web site www.svlsrm.org for current information. If you have not looked for a while, then you will have missed news or for sale items that are not in the newsletter.

Board of Directors

(##) Ending year of term

President: Andy Berchelli (916) 752-6697 (19)

E-mail: president@svlsrm.org

Vice President: Dennis Gramith (916) 988-7884 (18)

E-mail: vicepresident@svlsrm.org

Secretary: Alex Wilde (530) 919-5026 (19)

E-mail: secretary@svlsrm.org

Treasurer: Alison Berry (916) 983-9712 (18)

E-mail: treasurer@svlsrm.org

Track Superintendent: Dennis Bowie (916) 337-9492 (18)

E-mail: tracksuper@svlsrm.org

Yardmaster: Rob Sharratt (916) 631-8963 (18)

E-mail: yardmaster@svlsrm.org

Trainmaster: Peter Welch (916) 838 4998 (19)

E-mail: trainmaster@svlsrm.org

Director1: Bill Yoder (916) 652-7113 (18)

E-mail: director_bill@svlsrm.org

Director2: Steve Milward (530) 559-2472 (19)

E-mail: director_steve@svlsrm.org

Committee Chairpersons

Membership Chairperson: Barbara Rohrs (916) 730-1415

E-mail: membership@svlsrm.org

Safety Chairperson: --- OPEN ---

E-mail:

Caboose Chairperson: Barbara Moser (916) 645-3425

E-mail: caboose@svlsrm.org

Birthday & Company Event Chairperson: Stacy Reese

Phone: (916) 572-7857 E-mail: Events@svlsrm.org

Newsletter & Web Editor: Bill Yoder (916) 652-7113

E-mail: editor@svlsrm.org

Reminder - No phone calls after 8:59 PM

2018 Elections

Chris Donhost, Nominating Committee Chair

ELECTION

On an annual basis, members of Sacramento Valley Live Steamers Railroad Museum vote in an election to fill about half the positions on the board. Individuals serve a two year term, so this allows some continuity as new board members are brought on. This year we will fill the positions of Vice President, Treasurer, Track Superintendent, Director At Large (1), and Yardmaster. With the exception of Yardmaster, the members currently holding those positions have expressed an interest in serving another term. As for Yardmaster, Rob Sharratt, he has been in that position for the last 6 years, and decided it is time to pass the baton to another member. SVLSRM is extremely grateful for the service and leadership that Rob has provided our organization, please give him your personal thanks the next time you see him at the track.

The 2018 nominating committee presents the following members to serve on the SVLSRM Board of Directors for the 2019-2020 term:

- Vice-President: Dennis Gramith
- Treasurer: Allison Berry
- Track Superintendent: Dennis Bowie
- Director At Large (1): Bill Yoder
- Yardmaster: Richard Lutrel

Nominations from the floor will also be accepted at the October 19th General Membership Meeting (the Friday of the Fall Meet). The meeting will be held at the track at 7:30pm, following dinner. Membership will vote to accept the recommendations both of the nominating committee and all other nominations from the floor. Candidates will be announced in the November issue of the "Golden Spike," and the election will take place at the track on November 19th at 1:30pm during the November General Membership Meeting.



Train Masters Report

By Peter Welch



The SW1500 is getting a new power plant and a trucks rebuilt.

I have marked off the G gauge area and have started moving ties into place. Any help with this project would be awesome. The fall meet is coming up fast. I am checking all engine for boiler certificates so have them ready. I do honor them for other clubs. Thanks.



Have a neighbor or friend who has an interest in Live Steam / Trains? Bring them out, show them our fun, give them a ride and invite them to join.

Yard Masters Report

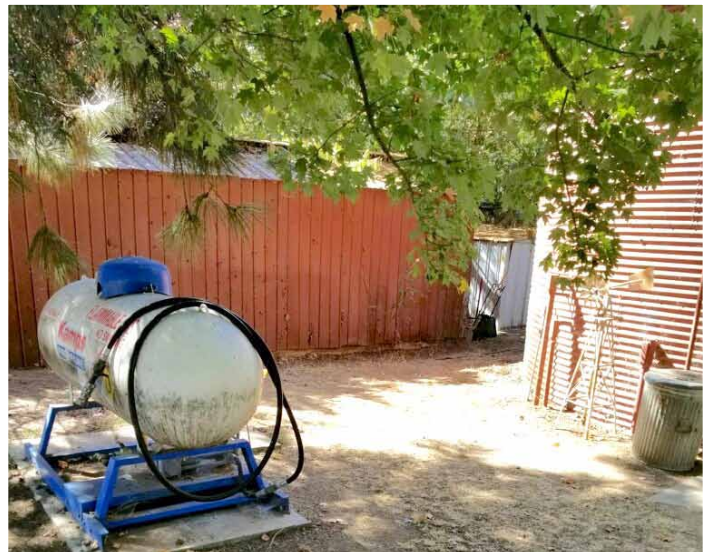
By Rob Sharratt



It's hard to believe it is October already. The pumpkin run and fall meet are right around the corner. We need volunteers for both events. Our club runs off of the efforts from those who are willing to help out. I would like to thank those who have stepped up with yard clean up and mowing.

Richard Lutrel has helped out with running the big mower keeping the main areas in shape. Marty has helped keep up with the push mower task around the steaming bays. I would also like to thank Keith Berry, Gordon and Barbara Moser for the major clean up around the roundhouse. The progress looks great.

In the coming months we will need help with all of the leaves and pine needles that fall every year.



Great clean up work by: Keith, Gordon, and Barbara





10 Years ago: Tyler's Train



Tyler Berchielli presented a picture he drew as a *thank you* to Pete for the help we provided in setting up his train which was provided by Make-A-Wish. The drawing shows his train, the Sun and a Deer that he had seen in the park.

It was expressed by Andy (Tyler's dad) that Tyler had a great time at the Fall Meet and was honored by those that allowed Tyler to drive and ride on other trains.



Engineer Tyler pulling several cars during Fall Meet.

20 Years ago: THE TRACK GANG

Many thanks to Keith Berry and his "Track Gang" for all their hard work. Given the list of things to do, this group is right on schedule and everything needing attention will be completed by meet time. We thank Keith for his organizational skills and diligence in getting the work done. Since the last newsletter, members who have labored on the "Track Gang" are Don, Ann and Kyle Bruner-Welch, Matt and Kristi Hall, Bernard Clifford and Tony Rhors. Also a big thanks to Don Jurgenson who quickly responded to a need mentioned at the September meeting and came out and did some much needed tree trimming. We thank everyone for their fast response to the work that needs to be done.

There is more to do before the meet and some after as well. So please take some time and give Keith Berry a call and see when the crew will be working and help out. A few hours is all we ask.

30 Years ago: From the CAB: Visible progress at last. During this past month, the heat has let up and we are starting to see some results from all the begging for help. As listed above, much work has been, and is being done. The facility and track are once again starting to look like somebody cares. Thank you to all who

Below are two photos from about 20 years ago. Double header running at the park, and a triple header running at Rail Fair in Roseville.



have helped. We still need more volunteers to be ready for the Fall Meet. Please step forward and pitch in.

Pits and Pieces: Please, Please do not leave the combination on the locks when they are opened. Also, please check to see that all locks are locked when you leave the track. Some of the locks are being left open and some are being left with the combination on them. Please be careful!

40 Years ago: "One of the Best" The Fall Meet was one of the best for the SVLS. There were 20 engines running during the two days, over 1,000 passengers hauled (lost count), 16 prizes won, guests from GGLS, LALS, Model RR clubs, hobby manufacturers and we showed a net income of \$377.55.

The weather was just great, the new water lines, parachutes and tent for shade, track condition, publicity by the Union and The Bee, Channel 13 and 3, and most of all "the people" made for a very pleasant week end of railroading. Space limits our giving thanks to all of the folks, who brought engines, cars and displays, individually, and to all who worked so hard before the meet and during the meet. THANK YOU ALL. Don't forget the New Years Day Run for Fun. One more thing - the nice green look of the steaming bay area was complimented by many who had see it before.





VOLUNTEERS

Run Day 9-1-2018
 Glen Wilson, Dennis Gramith, Rob Sharratt, Gordon, Barbara Moser, Bill, Butch Floyd, Alison Berry, Barbara Rohrs, Dennis Bowie, Keith & Gloria Berry, Richard Weitzenberg, Harry Voss, Dale Dennis, Austin Unruh

Run Day 9-2-2018
 Barbara Rohrs, Alison Berry, Gordon, Barbara Moser, Dennis Gramith, Harry Voss, Andy Berchielli, Bill, Butch Floyd

Workday 9-15-2018
 Glen Wilson, Harry Voss, Gordon, Barbara Moser, Dennis Bowie, Marty Carapiet, Mark Cundiff, Tom Reese, Steve Milward, Barbara Rohrs, Keith Berry, Dennis Gramith, Alison Berry

Members Run Day 9-16-2018
 Dennis Gramith, Gordon, Barbara Moser, Marty Carapiet, Mike Keiser, Evan Guinta, Phil, Stephanie Huntingdale



SAFETY RULES FOR THE MONTH



1.14 Pets: No pets of any kind shall be allowed to run free within the facility. All pets shall be confined on a leash not over 6 feet in length, or inside a crate or pen. The owner of such pets shall be responsible for immediately cleaning up any manure or

other disagreeable mess caused by such pet. Any violation of this rule may result in both pet and owner being asked to leave the facility. Animals

- 2.03 Night Time Operations: All locomotives operating after sunset shall be equipped in the following manner:
- Working headlight.
 - Lighted cab on steam engines.
 - Marker light or lantern on the rear of the last car.
 - Conductor/Brakemen shall have a lighted lantern or flashlight suitable for making hand signals.

- 3.11 Conductor/Trainman Whistle Signals: Communicating signals are used by the conductor when necessary to convey a message to the engineer while the train is running. Communicating signals are blown on the conductor's whistle, loud enough for the engineer to hear above the noise of the engine. Communicating signals given by Conductor/Trainman:
- ("O": denotes a short blast " _ " : denotes a longer blast)
- OO When standing, proceed.
 - _ _ When running, STOP.
 - OOO When standing, back up.
 - OOO When running, stop at the next station.
 - OOOO When running, reduce speed.

4.07 Gondola Cars: The use of SVLSRM gondola cars will not be permitted for carrying the general public. Bulky items okay.

Every meet I always have a number of people telling me what shirt they would really like. It is difficult for me to keep track of all this as I only order merchandise once or twice a year.



I have created a form (below) to use if there is something you want me to order. Please keep in mind that I might need to have a minimum order or the charge may be more than the usual. Also, if you cannot come to the park to pick up your order, there will be an additional charge for anything mailed. I will be ordering 25 hats for the Fall Meet. I am also ordering more of the men's short sleeved navy pocket t-shirt (yellow logo). I sold out of those at the Spring Meet.

Please feel free to contact me with any questions. E-mail is the best way to ask me questions. If you wish to pay in advance (preferred for special orders), you can mail the form with your check to SVLSRM, PO Box 273, Rancho Cordova, CA 95671

Alison Berry treasurer@svlsrm.org

Order form can be found on-line in the documents section of svlsrm. http://www.svlsrm.org/documents/Merchandise_Order_Form.pdf



Date: _____

Name: _____

Contact Info: Cell Number _____

E-Mail: _____

T-Shirt \$15 Polo Shirt: \$20 Sweatshirt: \$25 Denim shirt: \$25 *3 XL & 4XL \$5 more
 Hats \$15
 Size: S M L XL 2XL 3XL 4 XL

T-shirt	Short sleeve	Long Sleeve	Pocket
Size:			
Color:			
Silk screen	Front	Back	
Embroidered	Front		Total: _____

Polo	Short sleeve	Long Sleeve	Pocket
Size:			
Color:			
Silk screen	Front	Back	
Embroidered	Front		Total: _____

Sweatshirt:	Hoodie/Pullover Hoodie/Zippered	Crew Neck/Pullover
Size:		
Color:		Total: _____

Denim shirt:	
Size	Total: _____

Hat	Embroidered logo	Silk screen logo
Color		Total: _____

Total Due:

Contact Alison Berry @ treasurer@svlsrm.org if you have any questions

Please note: additional charges for mailing order Date Paid: _____

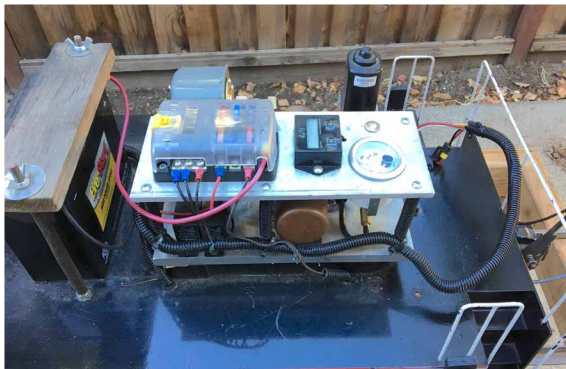
FOR SALE

7.5" ga. Morris EMD style switcher and car

This is a Morris EMD profile locomotive and gondola riding car. The locomotive is rigged to run cab forward moving the noise, heat and exhaust away from the engineer. This is totally ready to run and needs nothing. The locomotive has been painted with prototypically correct, professionally applied automotive paint and fresh vinyl graphics. An upgraded hydrostatic drive has been installed as well as a pressure driven air brake system using a GAST 12 volt compressor. Mountain Car Company brakes are installed on the engineers car using Tom Bee controls. The brakes have proved a must for handling trains with five adult passengers down the grades at Train Mountain.



Features included: Rigged to run cab forward, may be changed to hood forward Head lights Horn Reliable Honda motor, very fuel efficient Upgraded Eaton hydrostatic transmission Prototypically correct automotive paint, applied by body shop Fresh Miracle vinyl graphics Marine quality wiring Brake system compressor system using premium Gast compressor Air brakes installed in engineers car Battery charging by magneto and installed charging port Trickle charger included Safety cables Includes everything pictured including dual seats in gondola and storage rack. Shows some wear from normal use.




Includes everything pictured including dual seats in gondola and storage rack. Shows some wear from normal use. \$9,500.00 or best offer. Contact Tom Via E-mail "maybelater65@yahoo.com" or 707-257-6464

You can be on the rails in steam for only \$5000/offer. I am offering my complete, RTR train consisting of a 7.5" gauge INVICTA locomotive, tender, engineer riding car, and tool car. Loco has a propane fired steel boiler with copper tubes, axle driven feed pump backed up by a hand pump in the tender as well as a axle driven mechanical lubricator. The engine is a twin cylinder double acting with a bore and stroke of 1"x 2.2" There are hand operated mechanical brakes on the engineer's riding car. Tools for firing up and change out the propane tank, lubrication bottles, foot peg bar for tool car and misc. fittings.

Contact Bill Cody at 775-674-6512, cell 775-233-1429 or Email to: steamboatbill@sbcglobal.net Engine is located in Reno, Nevada and can be delivered for a fee. To see and hear a video on the engine being fired and run on the bench, click on this [Video link](#)

South Bend 1929 engine lathe. 16x60 swing, 3 HP 240V single phase motor, threading gearbox, 3 jaw & 4 jaw chuck, steady rest, follower rest, 16 inch faceplate, belt drive, live center, 3/4 inch Jacobs chuck. Bearings rebuilt by Gene Allen in 1972. Lathe is great shape.

\$3000. Call Ross Crawford (916) 718-4162



The club needs more members to be active with our public ride days, and our special events like Parties, Santa Run, and special events. **These events provide our main source of income so please come out and help.** Please volunteer by being added to the crew call list for hauling public to e-mail: secretary@svlsrm.org.