

# The GOLDEN SPIKE



www.svlstrm.org

November 2018

Volume 45, Issue 11



## President's Report

By Andy Berchielli

For the month of October we held our 2nd annual Pumpkin Train event and our 45th Fall Meet. The weather has been great for the month. With that we had a large attendance for the Pumpkin Train with over 1200 riders for the two days. We ran three trains nonstop to our pumpkin patch where families picked out their pumpkins, took photos, and enjoy some shaved ice from Kona Ice. We did a survey and people really enjoyed the event. They would like more photo spots next year. Barbara Rohrs did a great job at painting two backdrops. If members have some more ideas and would like to pitch in, you are more than welcomed. Remember this is a kid friendly event and the club really benefits from it without too much effort going towards it.

We finished a busy October with our Fall Meet. Again with great weather, we had a good turnout for the Fall Meet with visitors from Washington, Utah and Oregon. Reserving steaming bays, sidings and RV's seems to be working well. Assigning spots eliminates the hassle of trying to find a place for people at the last minutes. Keep this in mind when our Spring Meet rolls around. The online form will be available about three weeks before our meets. It takes many hours leading up to our meets to make it successful. This could not be done without countless hours put in by the board and many members. I would like to thank everyone who pitches in to help make the club what it is today. Your help takes the burden off of having a handful of people do all the work. Our train family working together makes life enjoyable and you can see the results from all the happy visitors that appreciate the railroad changes happening at the park.

The Board Meeting for November 12 has been moved to Round Table at 2234 Sunrise Blvd. Meeting will be at 6:30pm. If you wish to eat pizza please show up by 6pm.

November is also Club elections at the membership meeting being held at the track on **November 17 at 1:30pm**. The October general meeting closed the nominations for election election this year listing: Vice President-Dennis Gramith; Treasurer-Alison Berry; Track-Dennis Bowie; Yard-Richard Lutrel; Director at Large-Bill Yoder.

We will be giving train rides at the Rancho Cordova Christmas tree lighting event on November 25th with setup on Saturday the

*continued on page 3*



Rancho Cordova's annual Christmas tree lighting is November 25, 2018. This is a wonderful community event, and lots of fun and gives us the opportunity to share our trains and rides with the community.

We will be setting up the portable track on the 24th. As members of the Community Council, our club enjoys their support and the opportunity to use facilities for our Board meetings and the Christmas party.

Help will be needed for setup and take down and running.

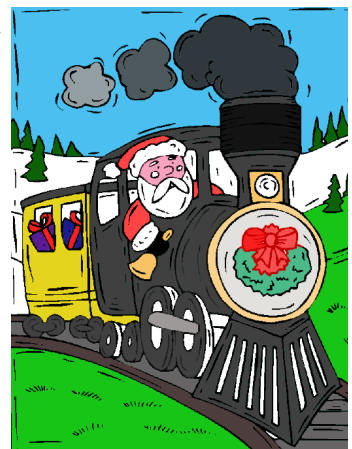
Contact Dennis Gramith (916) 988-7884



**Santa train** - Dec. 1, 2 & 8, 9  
Santa is indeed coming to town and we are going to need your help. We will be doing our Santa Train the first two weekends in December. We will need engineers, conductor, station help, village workers, baked goods and candy canes. We will start setting up in last week of November and that requires lots help also.

Come on out and get in the spirit of the season.

Contact Dennis Gramith  
(916) 988-7884



## SVLSRM Calendar

- Nov. 12 Board Meeting 6:30 pm at Round Table Pizza at 2234 Sunrise Blvd, Rancho Cordova Members welcome. Pizza at 6 PM.
- Nov. 17 Work Day & General Meeting at 1:30 at club track
- Nov. 18 Member Run Day
- Nov. 24 setup for Rancho Cordova tree lighting
- Nov. 25 Rancho Cordova tree running 4 to 8 PM
- Nov. 26 cleanup from Rancho Cordova tree lighting
- Nov. 28-30 setup for Santa experience event - help needed
- Dec. 1 Santa Train ride visit Santa and his locomotive. 11 AM to 3 PM Photos with Santa
- Dec. 2 Santa Train ride visit Santa and his locomotive. 11 AM to 3 PM Photos with Santa
- Dec. 8 Santa Train ride visit Santa and his locomotive. 11 AM to 3 PM Photos with Santa
- Dec. 9 Santa Train ride visit Santa and his locomotive. 11 AM to 3 PM Photos with Santa
- Dec. 15 Work Day
- Dec. 16 Member Run Day.

Please volunteer to support the club events.

**How will you support SVLSRM this month?**



Please check the SVLSRM web site [www.svlstrm.org](http://www.svlstrm.org) for current information. If you have not looked for a while, then you will have missed news or for sale items that are not in the newsletter.

Save SVLSRM some money and read the news letters on-line. Tell Membership that you don't need the mailed copy, we will notify you by E-mail so you can read it on-line.



**Help us save money.**

The Sacramento Valley Live Steamers Railroad Museum, Inc. is organized and operated exclusively for public benefit charitable purposes within the meaning of Section 501 (C.) (3) of the Internal Revenue Code.

Donors may deduct contributions to The Sacramento Valley Live Steamers Railroad Museum, Inc. to the fullest extent allowed by law as provided in Section 170 of the Internal Revenue Code.

**The Golden Spike** is the published monthly by the Sacramento Valley Live Steamers Railroad Museum, Inc., P.O. Box 273, Rancho Cordova, CA 95741. The SVLSRM track is located in Hagan Community Park, Chase Drive, Rancho Cordova, CA. Articles & Pictures may be submitted to: [editor@svlstrm.org](mailto:editor@svlstrm.org). **The news letter deadline is 24th of each month. Member articles wanted.**

## MEMBERSHIP

by Barbara Rohrs

Welcome to New Members:

Regular: Roland Lind  
Monica D'Angelo  
Andrew Sach (graduated to his own membership)

Associate: Jennifer & Hari Krishnam, son Trevor  
Greg & Heidi Kuzma, son John  
Adam & Heidi Pinales, children Payton, Paedyn, Mason

Meet Attendance: 83 Members & 65 Family Members  
Guests: 96



**DUES ARE DUE BY  
JAN 1, 2019**

Please complete your membership form noting changes. You can download form at [svlstrm.org](http://svlstrm.org). Send check or pay on-line at [svlstrm.org](http://svlstrm.org). Send forms to SVLS P.O. Box 273, Rancho Cordova, CA 95741

## Board of Directors

(##) *Ending year of term*

President: Andy Berchelli (916) 752-6697 (19)

E-mail: [president@svlstrm.org](mailto:president@svlstrm.org)

Vice President: Dennis Gramith (916) 988-7884 (18)

E-mail: [vicepresident@svlstrm.org](mailto:vicepresident@svlstrm.org)

Secretary: Alex Wilde (530) 919-5026 (19)

E-mail: [secretary@svlstrm.org](mailto:secretary@svlstrm.org)

Treasurer: Alison Berry (916) 983-9712 (18)

E-mail: [treasurer@svlstrm.org](mailto:treasurer@svlstrm.org)

Track Superintendent: Dennis Bowie (916) 337-9492 (18)

E-mail: [tracksuper@svlstrm.org](mailto:tracksuper@svlstrm.org)

Yardmaster: Rob Sharratt (916) 631-8963 (18)

E-mail: [yardmaster@svlstrm.org](mailto:yardmaster@svlstrm.org)

Trainmaster: Peter Welch (916) 838 4998 (19)

E-mail: [trainmaster@svlstrm.org](mailto:trainmaster@svlstrm.org)

Director1: Bill Yoder (916) 652-7113 (18)

E-mail: [director\\_bill@svlstrm.org](mailto:director_bill@svlstrm.org)

Director2: Steve Milward (530) 559-2472 (19)

E-mail: [director\\_steve@svlstrm.org](mailto:director_steve@svlstrm.org)

### Committee Chairpersons

Membership Chairperson: Barbara Rohrs (916) 730-1415

E-mail: [membership@svlstrm.org](mailto:membership@svlstrm.org)

Safety Chairperson: --- OPEN ---

E-mail:

Caboose Chairperson: Barbara Moser (916) 645-3425

E-mail: [caboose@svlstrm.org](mailto:caboose@svlstrm.org)

Birthday & Company Event Chairperson: Stacy Reese

Phone: (916) 572-7857 E-mail: [Events@svlstrm.org](mailto:Events@svlstrm.org)

Newsletter & Web Editor: Bill Yoder (916) 652-7113

E-mail: [editor@svlstrm.org](mailto:editor@svlstrm.org)

**Reminder - No phone calls after 8:59 PM**

President's Report continued

24th and final take down on Monday the 26th. Help is needed.

December is our Santa Train. We will need many cookies for all the happy families to enjoy while visiting Santa. Please feel free to donate as many cookies as you can. A small collections has already been started and stored in the club's freezer. Again we will need train crews plus many other to help with this event. We will need volunteers for the ticket booth, the photo booth, train crews, station crews, cabooses help and setup crews will be needed days before to get everything ready for the event. The community really enjoys this event and we need our members to work together to pull this off. I know some members will like to bring their trains down to help pull public. Please let me know in advance so we can plan on it. The plan is to run three trains about 10 minutes apart to keep the lines manageable.



Track Superintendent Report

By Dennis Bowie

With fall meet ended, I would like to say to all those that helped with the track clean up and servicing of switches. Good work everyone and thank you. There were some problems

that came up with the track that will need to be addressed. The electric switch that leads in to the oasis sidings was popping the GFCI breaker and affecting the flow of traffic. This will need to be looked into. Also we had several derailments at the switch that leads in to track one at Cordova station. It appears that about the first inch of the point of the frog has been snapped off, and when track one is selected a wheel flange will walk up and out of the frog and we get a derailment. Track 2 works fine, so there is tape over the button on the sector for track one to keep people from pressing it. So we will need to get a new frog made up before Santa Run.



Some of the following people have been showing up on Tuesdays if they have time and working on a miscellaneous projects or raking up leaves and pine needles.

Richard Lutrel, Bill Yoder, Dennis Gramith, Keith Berry, Gordon & Barbara Moser

Pumpkin Train Helpers October 5,6,7 2018:

Harry Voss, Bill & Butch Floyd, Gordon, Barbara & Lisa Moser, Alison Berry, Tom & Stacy reese, Dennis Gramith, Dennis, Heidi, Maren & Ryan Bowie, Deanna Kleelen , Gordon & Peggy Dunham, Phil & Stephanie Huntingdale, Barbara Rohrs, Richard & Brianna Lutrel, Peter Welch, Bobby Mitchells, Evan Guinta, Christopher Disney, Dean Sheets, Rob & Tami Sharratt, Chris, Evelyn, Paul, Eli Donhost, Keith & Kathy McBride, John Bailie, Matt Mason, Bill Yoder



Director - Steve Milward

Okay, take a deep breath. We've gotten through a busy late summer season. Work days, run days, the Pumpkin Trains and finally, the Fall Meet.

The meet was by most indicators quite successful. It was quieter than some, but we had beautiful weather, good food, happy guests and very few situations that required attention.

As always, we could have used more help with the set up and day to day tasks during the meet. That's always the area that could stand the most improvement. Sadly, the large share of the work tends to fall on the backs of a dozen or so members who put their personal lives on hold to make sure these activities will take place. In the perfect world all hands would pitch in to get the job done.

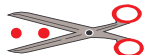
Next up is the Tree lighting and operation in Rancho Cordova, closely follow by our Santa Trains in December. The Tree lighting is our opportunity to give back to the City of Rancho Cordova for their continued support of our organization. The Santa Trains are of course something of a holiday tradition for many families now, in addition to being our biggest fund raiser.

For these events to succeed, we'll really need your help! It's really hard to overstate how much we need folks to come down and be a part of these events. It can be a lot of work, but it can be fun, too!

Our successes in the future may well be determined by the willingness of our membership to be involved.



The new on-line meet registration for the Fall meet process had 35 preregistration reserving 26 steaming bays, and 821 feet of spur storage for cars & non steam engines. Thanks to those that plan ahead. If you have suggestions for on-line registration please send it to editor@svlsrm.



Members if you can not come to the meeting on Nov. 17th, then please mail in your ballot.

		Vote on each below
Y	N	Vice President - Dennis Gramith
Y	N	Treasurer - Alison Berry
Y	N	Track Superintendent - Dennis Bowie
Y	N	Yardmaster - Richard Lutrel
Y	N	Director at Large - Bill Yoder

- Cut out or copy and mail to SVLSRM - election
- PO box 273 Rancho Cordova, CA 95741 -> by Nov. 14th





**10 Years ago:** The Live Steamer's goal this year was to increase the number and quality of our own trackside events. Train riders were greeted by a talking Gargoyle atop a stone arch that warned train passengers about entering at their own risk. Riders passed several creatures that jumped, moved, screeched, and lit up

in surprising ways. A skeleton engineer on a radio controlled engine and car passed by the passenger train on a parallel track cackling and laughing as he did so. Our truss bridge became a creepy, covered, fog-filled tunnel complete with demonic sounds, creatures, and strobe lights. Eerily lit ghosts floated high overhead and a graveyard with deathly sounds and chanting completed the ride experience.



1. Place popped corn in a paper grocery bag and roll up ends tightly for ease of handling later. Set aside.
2. Measure butter, sugar, corn syrup, and salt in 1 qt. bowl. Cook in microwave 2-3 minutes on high or until boiling. Stir and microwave again 2-3 minutes at high, stirring often.
3. Stir in soda. Pour over popped corn in bag. Roll up ends. Microwave for 2 minutes on high. Shake the bag well. Microwave again for 1 minute on High. Pour onto waxed paper or foil. Enjoy!

**30 Years ago:** Share Club Loco Pay Back - If you have purchased a share or shares in the Club Locomotive, your pay back for 1988 is enclosed with your "Golden Spike" this month. Please make a notation on the back of the Share Certificate to indicate this pay back. Thank you for supporting your club in a time of need. Those of you who have converted your share or shares to a donation, please surrender your share certificate to the Treasurer, and THANK YOU for your most generous donation.

**40 Years ago:**  
"PUFFS OF SMOKE OOOOoo"

Hey You! I don't know your name or I am just too embarrassed to ask your name since we've met before and you've been a member for 10 years or are a newcomer, but I know it would save us both some red faces if EVERYBODY WORE A NAME TAG OR BADGE at ALL railroad functions. It happens to me (the member had grown a beard) and it happens to you. Mystery of who put the weed killer along the track route is solved - those de Freitas brothers get all the thanks for an excellent job. We'll let them do it again.



Above the flying ghosts that moved above the tracks and at night (below) they glowed. (yes its dark, but so was the night)



**20 Years ago:** Caramel Corn - Many of you asked Alison for her recipe for the Caramel Corn she had on the raffle table at the Meet. She has included it here for those who would like it.

- 3 qts. popped popcorn
- 1/2 cup butter
- 1/2 cup light brown sugar
- 1/3 cup corn syrup
- Dash of salt
- 1 tsp. baking soda



#### SAFETY RULES FOR THE MONTH



**2.08 Water Pumps and Injectors**  
All steam locomotives shall have at least two devices for transmitting water to the boiler. At least one of these devices shall be operable when the locomotive is not in motion.

#### 3.01 Responsibilities of the Engineer

The Engineer is responsible for the safe handling of the train and the cars at all times. They must be in close cooperation with all other operating personnel, observing all rules and signals (whistles, hand, flag or light) given by the conductor and stationmaster. They must run their engine in conformance with SVLSRM safety rules at all times. They must see that any SVLSRM equipment used by them is returned to its proper storage space at the end of their run, unless another engineer takes over the responsibility of such equipment and agrees to see that such equipment is properly stored after its use.

**4.08 Nature of Locomotion:** Trains carrying the general public can be double headed; no helper engine can be elsewhere in the train, or pushing on the rear of the train.







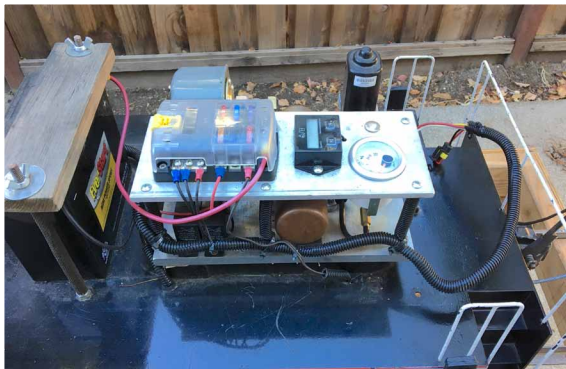
# FOR SALE

## 7.5" ga. Morris EMD style switcher and car

This is a Morris EMD profile locomotive and gondola riding car. The locomotive is rigged to run cab forward moving the noise, heat and exhaust away from the engineer. This is totally ready to run and needs nothing. The locomotive has been painted with prototypically correct, professionally applied automotive paint and fresh vinyl graphics. An upgraded hydrostatic drive has been installed as well as a pressure driven air brake system using a GAST 12 volt compressor. Mountain Car Company brakes are installed on the engineers car using Tom Bee controls. The brakes have proved a must for handling trains with five adult passengers down the grades at Train Mountain.



Features included: Rigged to run cab forward, may be changed to hood forward Head lights Horn Reliable Honda motor, very fuel efficient Upgraded Eaton hydrostatic transmission Prototypically correct automotive paint, applied by body shop Fresh Miracle vinyl graphics Marine quality wiring Brake system compressor system using premium Gast compressor Air brakes installed in engineers car Battery charging by magneto and installed charging port Trickle charger included Safety cables Includes everything pictured including dual seats in gondola and storage rack. Shows some wear from normal use.



Includes everything pictured including dual seats in gondola and storage rack. Shows some wear from normal use.  
\$9,500.00 or best offer. Contact Tom Via E-mail "maybelater65@yahoo.com" or 707-257-6464

**You can be on the rails in steam for only \$5000/offer.** I am offering my complete, RTR train consisting of a 7.5" gauge INVICTA locomotive, tender, engineer riding car, and tool car. Loco has a propane fired steel boiler with copper tubes, axle driven feed pump backed up by a hand pump in the tender as well as a axle driven mechanical lubricator. The engine is a twin cylinder double acting with a bore and stroke of 1"x 2.2" There are hand operated mechanical brakes on the engineer's riding car. Tools for firing up and change out the propane tank, lubrication bottles, foot peg bar for tool car and misc. fittings.

Contact Bill Cody at 775-674-6512, cell 775-233-1429 or Email to: [steamboatbill@sbcglobal.net](mailto:steamboatbill@sbcglobal.net)  
Engine is located in Reno, Nevada and can be delivered for a fee. To see and hear a video on the engine being fired and run on the bench, click on this [Video link](#)

South Bend 1929 engine lathe. 16x60 swing, 3 HP 240V single phase motor, threading gearbox, 3 jaw & 4 jaw chuck, steady rest, follower rest, 16 inch faceplate, belt drive, live center, 3/4 inch Jacobs chuck. Bearings rebuilt by Gene Allen in 1972. Lathe is great shape.

\$3000. Call Ross Crawford (916) 718-4162



The club needs more members to be active with our public ride days, and our special events like Parties, Santa Run, and special events.

**These events provide our main source of income so please come out and help.**

Please volunteer by being added to the crew call list for hauling public to e-mail: [secretary@svlsrcm.org](mailto:secretary@svlsrcm.org).