

# The GOLDEN SPIKE



www.svlarm.org

December 2018

Volume 45, Issue 12



## President's Report

By Andy Berchielli

Greeting Live Steamers! I look back on this year with great pride. The club completed many projects that have been in the works for a while. We started off with a new gravel storage; a new yard; replaced our aging tractor; completed our long term irrigation project; a new engine; and the organization of our containers along with the continued work of replacing the mainline with steel rail and plastic ties. Of course the one project that everyone noticed is the addition of waterfalls under Twin Bridges. All of this could not happen with you, the members of SVLSRM and the leadership of the board.

I would like to thank each and every one that contributes their time for the benefit of the railroad. With that being said the club needs the members help for one more event this year. The Santa Train! As you may know this event has grown in popularity over the years. We will need all hands on deck to make this a smooth event for all. We will setup from November 27-30. Then running the event December 1+2 and 8+9. Then tear down the following week. If the weather cooperates we will hand out approximately 2000 cookies each weekend. If you can't attend just bringing down cookies is a great help.

We received a donation of some Milwaukee cordless tools. If you use them, **return them**. Also we can add... The club is looking for a 18' to 20' flat bed trailer. It is in the best interest of the club to have its own equipment instead of borrowing personal equipment. If you know of one, let me know.



Again thanks for making this a great year and we'll look forward to tackling more projects next year with you!

**HAPPY HOLIDAYS!**



This marks the 11th year we have run our train around the Rancho Cordova Christmas tree at their tree lighting event. Estimated we had over 800 riders enjoying the ride. Special thanks to those that made the effort in supporting the club to support Rancho Cordova.

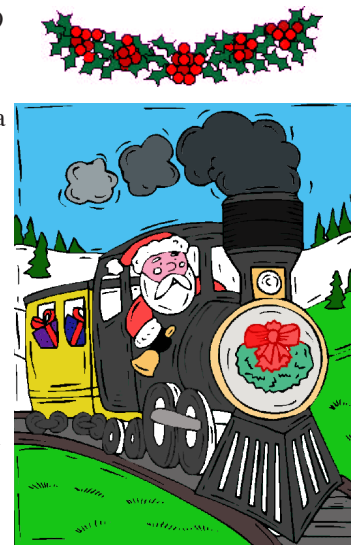
If you did not help, then you can with the next event, the Santa Train, Help is needed at the club setting up starting this Tuesday through Friday (Nov 27-30). *See details below.*

## Santa Train - Dec. 1, 2 & 8, 9

Santa is indeed coming to town and we are going to need your help. We will be doing our Santa Train the *first two weekends* in December. We will need engineers, conductors, station helpers, village workers, baked goods and candy canes. We will be setting up Tuesday through Friday (Nov 27-30) and that requires lots help.

Come on out and get in the spirit of the season.

Contact Dennis Gramith  
(916) 988-7884



## SVLSRM Calendar

Nov. 27-30 setup for Santa experience event - help needed  
 Dec. 1 Santa Train ride visit Santa and his locomotive.  
 11 AM to 3 PM Photos with Santa.  
 Dec. 2 Santa Train ride visit Santa and his locomotive.  
 11 AM to 3 PM Photos with Santa.  
 Dec. 8 Santa Train ride visit Santa and his locomotive.  
 11 AM to 3 PM Photos with Santa.  
 Dec. 9 Santa Train ride visit Santa and his locomotive.  
 11 AM to 3 PM Photos with Santa.  
 Dec. 10 Board Meeting 6:30. RC City hall.  
 Dec. 15 Work Day.  
 Dec. 16 Member Run Day.

Jan. 1 Annual News Year day run, pot luck lunch.  
 Jan. 5 & 6 Winter track projects - each weekend of January.  
 Jan. 11 SVLSRM new annual dinner 6:30.  
 Jan. 12 & 13 Winter track projects - each weekend of January  
 Jan. 14 Board Meeting 6:30. RC city hall.  
 Jan. 19 & 20 Winter track projects - each weekend of January.  
 Jan. 27 & 28 Winter track projects - each weekend of January

February - check back as track projects may continue.  
 Please volunteer to support the club events.

***How will you support SVLSRM this month?***



Please check the SVLSRM web site [www.svlsrcm.org](http://www.svlsrcm.org) for current information. If you have not looked for a while, then you will have missed news or for sale items that are not in the newsletter.

Save SVLSRM some money and read the news letters on-line.

Tell Membership that you don't need the mailed copy, we will notify you by E-mail so you can read it on-line.



**Help us save money.**

The Sacramento Valley Live Steamers Railroad Museum, Inc. is organized and operated exclusively for public benefit charitable purposes within the meaning of Section 501 (C.) (3) of the Internal Revenue Code.

Donors may deduct contributions to The Sacramento Valley Live Steamers Railroad Museum, Inc. to the fullest extent allowed by law as provided in Section 170 of the Internal Revenue Code.

**The Golden Spike** is the published monthly by the Sacramento Valley Live Steamers Railroad Museum, Inc., P.O. Box 273, Rancho Cordova, CA 95741. The SVLSRM track is located in Hagan Community Park, Chase Drive, Rancho Cordova, CA. Articles & Pictures may be submitted to: [editor@svlsrcm.org](mailto:editor@svlsrcm.org).

**The news letter deadline is 24th of each month.**

**Member articles wanted.**

## MEMBERSHIP

*by Barbara Rohrs*

It is that time of year! 2019 dues renewal are being accepted. Regular - \$60; Associate - \$30. You can pay by a check in mail or Paypal (please mail in renewal form also). Please find a renewal form at the end of this newsletter that you can print out to mail in with your payment. New this year is a on-line form to submit, go to Membership web page and follow instructions. If you have any questions, please contact me. Merry Christmas. Barbara Rohrs, Membership



## DUES ARE DUE BY JAN 1, 2019

Please complete a membership form noting changes. You can renew on-line or download form at [svlsrcm.org](http://svlsrcm.org) then send check or pay on-line.

Send forms to SVLS P.O. Box 273, Rancho Cordova, CA 95741

## Board of Directors

(##) *Ending year of term*

President: Andy Berchelli (916) 752-6697 (19)

E-mail: [president@svlsrcm.org](mailto:president@svlsrcm.org)

Vice President: Dennis Gramith (916) 988-7884 (18)

E-mail: [vicepresident@svlsrcm.org](mailto:vicepresident@svlsrcm.org)

Secretary: Alex Wilde (530) 919-5026 (19)

E-mail: [secretary@svlsrcm.org](mailto:secretary@svlsrcm.org)

Treasurer: Alison Berry (916) 983-9712 (18)

E-mail: [treasurer@svlsrcm.org](mailto:treasurer@svlsrcm.org)

Track Superintendent: Dennis Bowie (916) 337-9492 (18)

E-mail: [tracksuper@svlsrcm.org](mailto:tracksuper@svlsrcm.org)

Yardmaster: Rob Sharratt (916) 631-8963 (18)

E-mail: [yardmaster@svlsrcm.org](mailto:yardmaster@svlsrcm.org)

Trainmaster: Peter Welch (916) 838 4998 (19)

E-mail: [trainmaster@svlsrcm.org](mailto:trainmaster@svlsrcm.org)

Director1: Bill Yoder (916) 652-7113 (18)

E-mail: [director\\_bill@svlsrcm.org](mailto:director_bill@svlsrcm.org)

Director2: Steve Milward (530) 559-2472 (19)

E-mail: [director\\_steve@svlsrcm.org](mailto:director_steve@svlsrcm.org)

### Committee Chairpersons

Membership Chairperson: Barbara Rohrs (916) 730-1415

E-mail: [membership@svlsrcm.org](mailto:membership@svlsrcm.org)

Safety Chairperson: --- OPEN ---

E-mail:

Caboose Chairperson: Barbara Moser (916) 645-3425

E-mail: [caboose@svlsrcm.org](mailto:caboose@svlsrcm.org)

Birthday & Company Event Chairperson: Stacy Reese

Phone: (916) 572-7857 E-mail: [Events@svlsrcm.org](mailto:Events@svlsrcm.org)

Newsletter & Web Editor: Bill Yoder (916) 652-7113

E-mail: [editor@svlsrcm.org](mailto:editor@svlsrcm.org)

**Reminder - No phone calls after 8:59 PM**





**Saturday Work Day** - November 17, 2018:  
Kevin & Andrew Sach, Mark Cundiff,  
Keith Berry (friend Steven), Harry Voss,  
Dennis Gramith, Paul Skidmore,  
Gordon (G1) & Barbara Moser,  
Gordon (G2) & Peggy Dunham,  
Dennis & Maren Bowie.

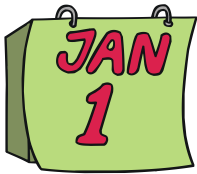
**Members Run Day:** Andy Berchielli, Mary Carapiet,  
Dennis Gramith, Barbara & Gordon Moser,  
Gordon & Peggy Dunham, Colton Snell and friend.



**Feng Shui (fung-shway):** *“Mainly concerned with understanding the relationships between nature and ourselves so that we might live in harmony within our environment.”* New age thinking? Probably. Applicable to SVLSRM? Probably, with a stretch, at least in the sense that feng shui at SVLSRM is defined by the character and interests of those who do participate in the organization and not by those who don't.

Not attending meetings, run days, work days because you would rather the organization be something other than it is now? Or the way it was at some past time? How about more social activities? Rearrange our physical layout? Fine. Be a part of changing the feng shui. Attend meetings. Show up for work days. Volunteer to head up social events, special member run days, mentor our young train enthusiasts. Run for office. Be a part of our great organization. Your opinions and ideas count but will remain unheard unless we all know about them.

See you (all) at the track. Keep on steaming!



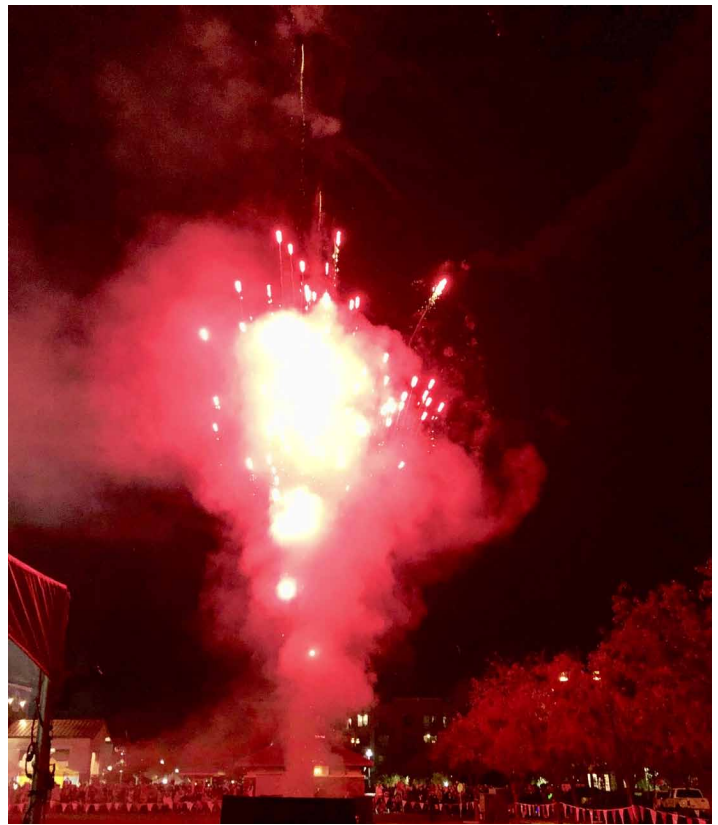
**NEW YEARS DAY 2019**

Let's start the New Year with a lot of steam, or smelly diesel and bring out your locomotive, rolling stock and enjoy a members run day on January 1, 2019.



*Bring food to share (potluck) for lunch.*

Mark your calendar for Tuesday January 1. Running starts at 10 AM and lunch about 1 PM. Ring in the New Year's Day behind your equipment and with fellow railroad members.



It was very bright and loud as the celebration of the Rancho Cordova tree lighting was completed with a great Fireworks show.



**10 Years ago: Rancho Cordova Christmas Tree Lighting Ceremony:** We set up our portable track for the first time at the new Village Green Park for the annual lighting of the City of Rancho Cordova Christmas tree on Sunday, Nov. 30. In prior years, the event took place at a local church. Starting this year, Cordova Community Council, the sponsoring organization, moved the event to a recently completed park near City Hall and

the newly developing center of Rancho Cordova. Thousands of people attended the holiday gathering that included live stage performances, musicians, free food and drink, a free horse-drawn hay ride, free train rides by the Live Steamers, and, of course, a visit by Santa Claus.

In a very picturesque setting consisting of a fourteen foot tall Christmas tree covered with hundreds of miniature white lights and snow falling all around, a one-eighth scale train set circled the tree carrying hundreds of passengers. Yes, snow! Even though Sunday was a clear but cool fall night, overhead snow machines provided a snowfall and made it all to appear as a white Christmas.

SVLSRM was a star attraction, however. The lines were always long with people waiting to ride. Even as the end of the event approached and many of the other attractions were closing, we still had long lines waiting. Everyone seemed to have a good time and our crew received endless thanks for the fun.

#### **20 Years ago: LOOKING BACK IS NOT THE WAY TO THE FUTURE**

Fall is definitely coming to an end and Winter is almost upon us; and with this season change, our 1998 season has also come to an end. The Sacramento Valley Live Steamers have taken on and reached quite an impressive number of goals during the 1998 season. The only way this happened was with the support of our club members, both old and new. If you now expect me to list these accomplishments and the names of those who have helped you are going to be disappointed. Most presidents do that this time of year, but not this one. If you were a member that chose to come out to the park to participate during the season, you have observed and enjoyed them first hand. If you have not, then you will not know what was accomplished until you come out to the park and enjoy them also. The future of SVLS lies somewhat in what we have accomplished, but more so in what we are going to do and how we are going to do it in the coming year. How about you, SVLS member, will you choose to give a helping hand next season? Will you decide to join other members so SVLS can reach its short and long term goals, growing, prospering and continuing to provide memories for young and old alike? Have a blessed Christmas and a Happy New Year from my family to you and your loved ones.

- TONY ROHRS - - PRESIDENT

**30 Years ago: Special Safety Note:** All operating personnel are advised to be especially alert for red signals during the period

between sunset 12/24 through sunrise 12/25! The red signal of particular concern will be of a flashing nature and on the head end of an extremely high priority merchandiser with superior train status on all tracks. The aforementioned extra will not sound a horn or whistle, but it is rumored that passing train crews have heard bells of a jingling nature and even an occasional, "HO, HO, HO"! Any crews delaying or impeding the progress of this extra shall be dealt disciplinary action far more severe than any listed in the rule books. Woe be the train crew passing through mountains, cities, and farms to which no children (of any age) will raise their hand to wave and mile after mile you'll never be greeted with a smile. You would be better off driving a, pardon the expression, truck!

**40 Years ago:** A meeting of outgoing and incoming Board was held on Dec. 5th at the home of Anita and Darrel McWhirk in Yuba City (After a fine potluck dinner). Past problems and future plans were thoroughly discussed, Darrel gave a financial report, and the new electees were properly railroaded into office as follows: President: Dick Quiring, VP: Keith Kirsten, Secretary: Gerry Carne, Superintendent: Tom Anderson, Trainmaster: Cliff Gnevo, and Dispatcher: Wally Ripley.

At the year's end the club can be proud of a good 12 months. Meetings were prompt and interesting, a large amount of work was done on the track and facilities, many trains were run and many passengers enjoyed our service, the club made money, and we gained ten new members! You can't beat that for progress.

*Happy Holiday*



#### **SAFETY RULES FOR THE MONTH**

2.10 Brakes: All locomotives or engineers' riding cars shall have the means to do a control stop in a safe manner.

#### 33.02 Responsibilities of the Conductor :

Each conductor shall have a whistle (police type) and a red flag or light in their possession at all times while acting as conductor. They shall assist in loading or unloading passengers on the train. They shall be certain that all passengers on their train have been informed of the safety rules before signaling to the engineer to proceed from the station. They shall enforce all passenger safety rules while the train is in motion. They shall enforce rules and shall prevent any passengers from throwing any trash, garbage or other refuse from the train along the right-of-way. They shall align all switches (turnouts) for the mainline after use of such switches by their train. They shall assist the engineer when necessary and shall call for help when necessary to enforce any rules.

4.03 Length of Train: Trains carrying the general public shall not exceed 100 feet in length over all, exclusive of locomotive and tender or other motive power.



**SACRAMENTO VALLEY LIVE STEAMERS RAILROAD MUSEUM  
MEMBERSHIP INFORMATION AND DUES INVOICE**

To be filled out upon application for membership and/or membership renewal

NEW       RENEWAL      DATE: \_\_\_\_\_

Type of membership desired:     regular     family     associate

Your Name: \_\_\_\_\_ Birthdate: \_\_\_\_\_

Spouse's Name: \_\_\_\_\_ Birthdate: \_\_\_\_\_

Family living at home (names and birthdates):

\_\_\_\_\_  
\_\_\_\_\_

Mailing Address: \_\_\_\_\_

City: \_\_\_\_\_ State: \_\_\_\_\_ Zip+4: \_\_\_\_\_

Home Phone: \_\_\_\_\_ Work Phone: \_\_\_\_\_ Cell Phone: \_\_\_\_\_

Email Address: \_\_\_\_\_ (Spouse) \_\_\_\_\_

List E-mail on web? \_\_\_\_ (Y/N)                      List E-mail on web? \_\_\_\_ (Y/N)

Please select one of the following means of receiving your monthly issues of The Golden Spike news letter:  
Receive E-Mail notice and get it on line at: [www.svlsrm.org](http://www.svlsrm.org) or a printed edition sent US mail: \_\_\_\_\_ (on-line / Mail)

Occupation: \_\_\_\_\_

Operable live steam equipment or under construction:

Do you have track at home?     Yes     No     Someday    Gauge: \_\_\_\_\_

Special skills and ways you would like to help SVLSRM:

\_\_\_\_\_  
\_\_\_\_\_

Affiliations with other railroads: \_\_\_\_\_

---

---

**We have two classes of membership: Regular or Associate.**

**REGULAR** class of membership (Individual or Family) is \$60.00 per year.  
**New regular membership includes a one-time track fee of \$40 and dues are prorated at \$5. per month from the month you join.** For example: if you join in January, fee is \$100, in June \$75, or in October \$55.  
New Membership includes one name badge with additional name badges available for \$10 each.  
**Regular membership is required for those living within a 60 mile radius of the club.**

**ASSOCIATE membership** is optional for those outside the 60 mile radius who do not want the Regular membership.  
Associate rate is \$30 per year with no track fee. Name badges are available for \$10 each.

Make check payable to: Sacramento Valley Live Steamers Railroad Museum, Inc.

**PLEASE COMPLETE THIS APPLICATION** then send with your dues to:

Sacramento Valley Live Steamers Railroad Museum, Inc.

Attn: Membership PO Box 273 Rancho Cordova, CA 95741-0273

---

Membership use:    Amount Paid: \_\_\_\_\_ Check \_\_\_\_\_ Cash \_\_\_\_\_ Donation \_\_\_\_\_

Data Base updated \_\_\_\_\_



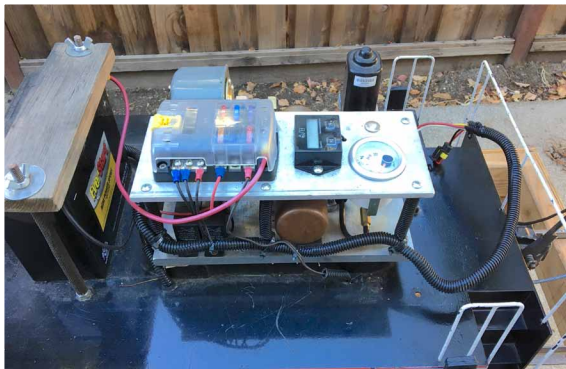
**FOR SALE**

**7.5" gauge Morris EMD style switcher and car.**

This is a Morris EMD profile locomotive and gondola riding car. The locomotive is rigged to run cab forward moving the noise, heat and exhaust away from the engineer. This is totally ready to run and needs nothing. The locomotive has been painted with prototypically correct, professionally applied automotive paint and fresh vinyl graphics. An upgraded hydrostatic drive has been installed as well as a pressure driven air brake system using a GAST 12 volt compressor. Mountain Car Company brakes are installed on the engineers car using Tom Bee controls. The brakes have proved a must for handling trains with five adult passengers down the grades at Train Mountain.



Features included: Rigged to run cab forward, may be changed to hood forward. Head lights Horn Reliable Honda motor, very fuel efficient. Upgraded Eaton hydrostatic transmission. Prototypical correct automotive paint, applied by body shop. Fresh Miracle vinyl graphics. Marine quality wiring Brake system compressor system using premium Gast compressor. Air brakes installed in engineers car. Battery charging by magneto and installed charging port Trickle charger included. Safety cables. Includes everything pictured including dual seats in gondola and storage rack. Shows some wear from normal use.



Includes everything pictured including dual seats in gondola and storage rack. Shows some wear from normal use.  
 \$9,500.00 or best offer. Contact Tom Via E-mail "maybelater65@yahoo.com" or 707-257-6464

South Bend 1929 engine lathe. 16x60 swing, 3 HP 240V single phase motor, threading gearbox, 3 jaw & 4 jaw chuck, steady rest, follower rest, 16 inch faceplate, belt drive, live center, 3/4 inch Jacobs chuck. Bearings rebuilt by Gene Allen in 1972. Lathe is great shape.

\$3000. Call Ross Crawford (916) 718-4162




Got Something for Sale?

Send to [Editor@svlsrm.org](mailto:Editor@svlsrm.org)



Check our web site FOR SALE page for pictures and more details.  
<http://www.svlsrm.org/>

Do you like running trains? We are in need of conductors, engineers and hostlers for both steam and diesel. If you are interested in joining our operating crew, please contact Alex Wilde at [secretary@svls.org](mailto:secretary@svls.org) to be added to our email list. We are in the process of creating updated tests to match our latest rule book release earlier this year. On the job training is available!



The club needs more members to be active with our public ride days, and our special events like Parties, Santa Run, and special events.

**These events provide our main source of income so please come out and help.**

Please volunteer by being added to the crew call list for hauling public to e-mail: [secretary@svlsrm.org](mailto:secretary@svlsrm.org).